

Project · Reference number

Date

**Application**

LED wall luminaire made of massive bronze alloy and stainless steel.

Luminaire for versatile applications where a highly robust construction and corrosion resistance are required.

The used LED technique offers durability and optimal light output with low power consumption at the same time.

The fixing system of the luminaire allows an easy installation in enclosed or hollow constructions without additional fixing holes. For the installation in walls made of concrete or brick work a suitable installation housing is available.

**Product description**

Luminaire cover made of cast bronze

Luminaire housing made of stainless steel

Steel grade number 1.4301

Crystal glass with optical texture, white inside

Silicone gasket

Fixing is achieved by using three adjustable wedge-shaped claws, European patent EP 0 686 806

2 cable entries for through-wiring of mains supply cable  $\varnothing$  7 - 10,5 mm, max. 3 G 1.5<sup>□</sup>

Connecting terminal 2.5<sup>□</sup>

Earth conductor connection

LED power supply unit

220-240 V  $\sim$  0/50-60 Hz

DC 176-264 V

Safety class I

Protection class IP 65

Dust-tight and protection against water jets

CE – Conformity mark

Weight: 5.1 kg

**Bronze**

The luminaire is made of massive bronze and delivered with the metal's natural surface.

Time and weather factors create the natural patina characteristic for bronze.

**Lamp**

Module connected wattage 6.3 W

Luminaire connected wattage 8.6 W

Rated temperature  $t_a = 25 \text{ }^\circ\text{C}$

Ambient temperature  $t_{a \text{ max}} = 35 \text{ }^\circ\text{C}$

Module designation LED-0416/830

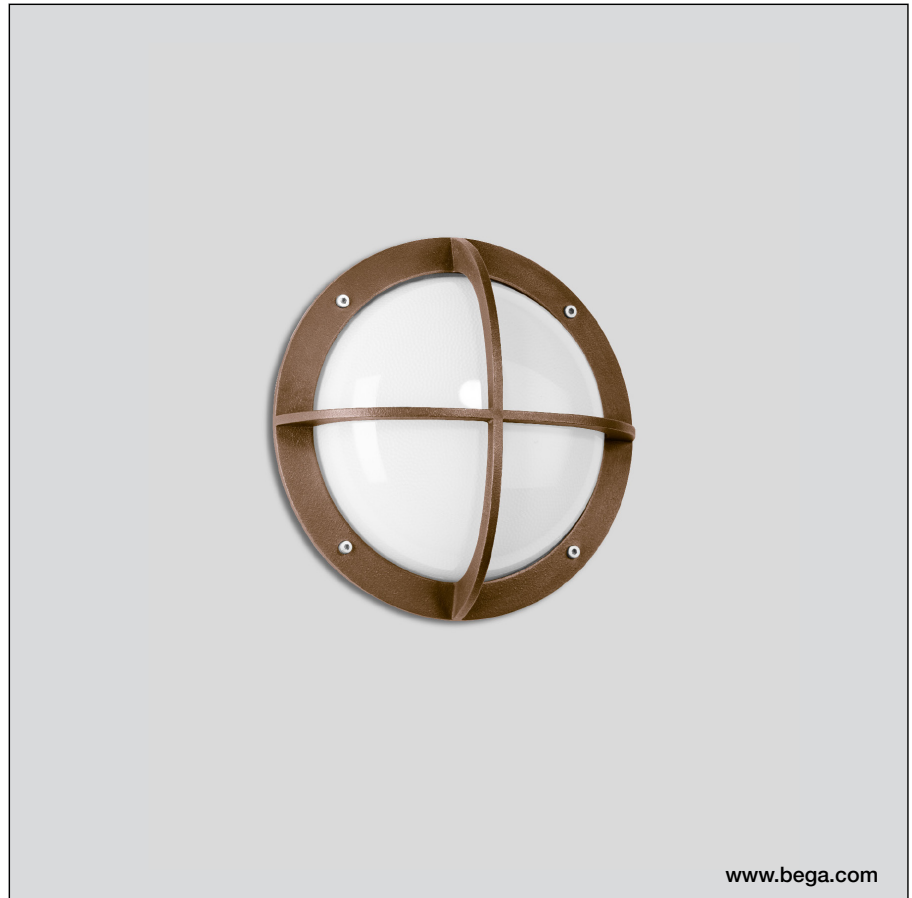
Colour temperature 3000 K

Colour rendering index  $R_a > 80$

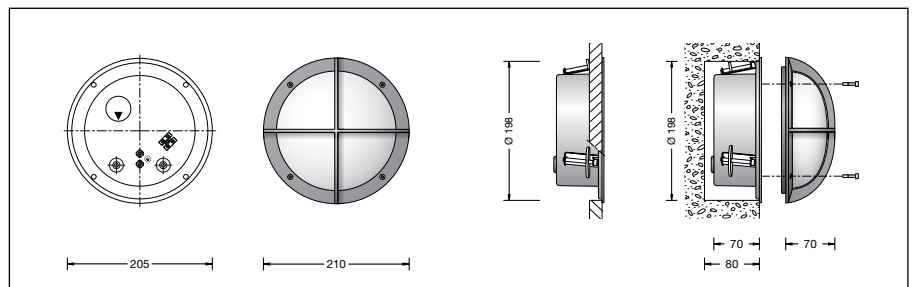
Module luminous flux 670 lm

Luminaire luminous flux 237 lm

Luminaire luminous efficiency 27,6 lm/W



www.bega.com

**Lifetime of the LED**

Ambient temperature  $t_a = 15 \text{ }^\circ\text{C}$

– at 50,000h: L90B10

– at 430,000h: L70B50

Ambient temperature  $t_a = 25 \text{ }^\circ\text{C}$

– at 50,000h: L90B10

– at 320,000h: L70B50

max. ambient temperature  $t_a = 35 \text{ }^\circ\text{C}$

– at 50,000h: L90B50

– at 240,000h: L70B50

**Accessories**

**B 597** Installation housing

A separate instructions for use can be provided upon request.