

BEGA**24 127**

Wall luminaire

IP 65

Project · Reference number

Date

Product data sheet**Application**

LED wall luminaire with shielded light.
Light emission $2 \times 15^\circ$.
Fully glare free light for lighting wall surfaces
and for interior or exterior lighting design.

Product description

Luminaire made of aluminium alloy,
aluminium and stainless steel
Safety glass
Optical silicone lens
Light sector $2 \times 15^\circ$
Mounting plate with
4 mounting holes $\varnothing 4.5$ mm
Distance apart 86×86 mm
2 cable entries for through-wiring of mains
supply cable $\varnothing 7-12$ mm,
max. 5G1.5[□]
Connecting terminal 2.5[□]
with plug connection
Earth conductor connection
LED power supply unit
220-240 V \sim 0/50-60 Hz
DC 176-276 V
DALI controllable
A basic isolation exists between power cable
and control line
Safety class I
Protection class IP 65
Dust-tight and protection against water jets
CE – Conformity mark

Inrush current

Inrush current: 4 A / 30 μ s
Maximum number of luminaires of this
type per miniature circuit breaker:
B10A: 50 luminaires
B16A: 50 luminaires
C10A: 50 luminaires
C16A: 50 luminaires

Lamp

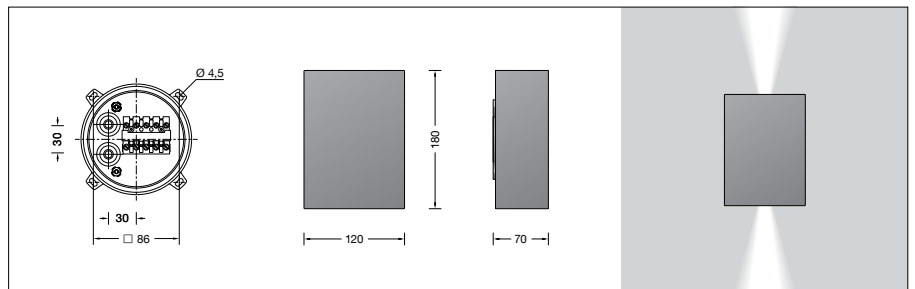
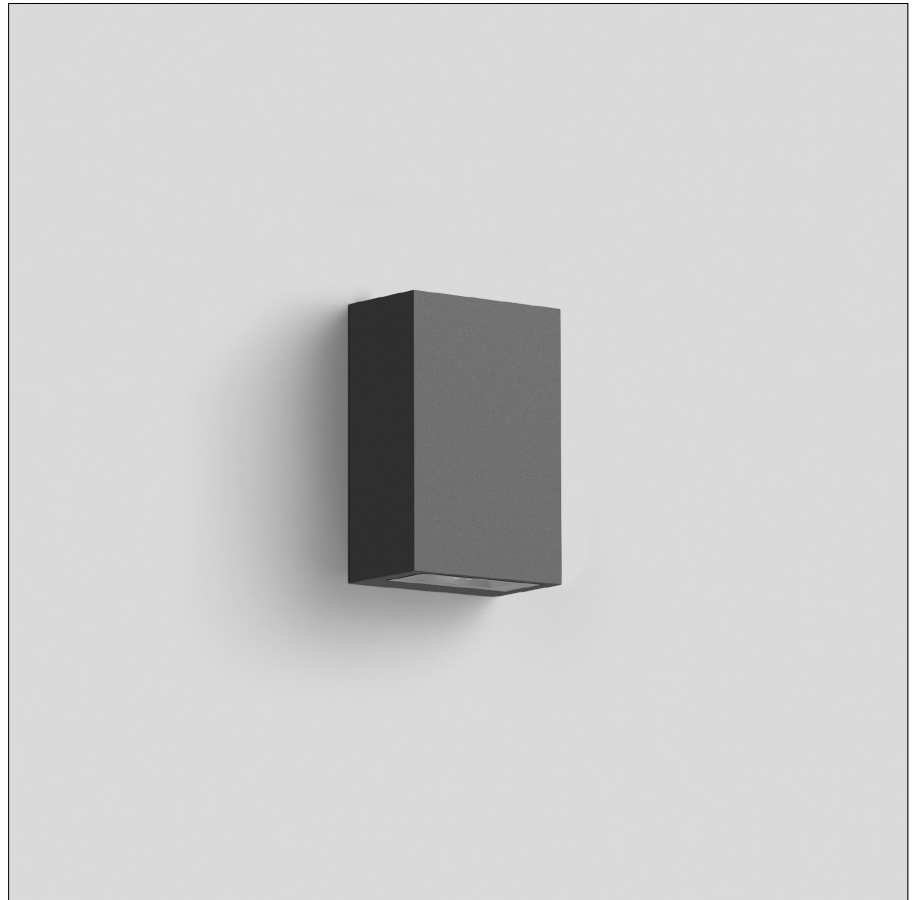
Module connected wattage	4 W
Luminaire connected wattage	5.6 W
Rated temperature	$t_a = 25^\circ \text{C}$
Ambient temperature	$t_{a \text{ max}} = 60^\circ \text{C}$

24 127 K3

Module designation	2x LED-0886/830
Colour temperature	3000 K
Colour rendering index	CRI > 80
Module luminous flux	580 lm
Luminaire luminous flux	175 lm
Luminaire luminous efficiency	31,3 lm/W

24 127 K4

Module designation	2x LED-0886/840
Colour temperature	4000 K
Colour rendering index	CRI > 80
Module luminous flux	620 lm
Luminaire luminous flux	187 lm
Luminaire luminous efficiency	33,4 lm/W

**Service life of the LED**

Ambient temperature $t_a = 25^\circ \text{C}$
– at > 500,000h: L70B50

max. ambient temperature $t_a = 60^\circ \text{C}$
– at 280,000h: L70B50

Light technique

Luminaire data for the light planning program
DIALux for outdoor lighting, street lighting and
indoor lighting as well as luminaire data in
EULUMDAT- and IES-format you will find on the
BEGA web page www.bega.com.

Article No. 24 127

LED colour temperature optionally 3000K
or 4000K

3000 K – Article number + **K3**
4000 K – Article number + **K4**

Colour optionally graphite, white or silver
Graphite – Article number
White – Article number + **W**
Silver – Article number + **A**

Light distribution