

BEGA**22 359**

Wall luminaire



Project · Reference number

Date

Product data sheet

Application

Wall luminaire with shielded light source.
A luminaire of high protection class and single-sided, downwards directed light sector.
For a variety of lighting tasks in interior and exterior lighting applications.
The used LED technique offers durability and optimal light output with low power consumption at the same time.

Product description

Luminaire made of aluminium alloy,
aluminium and stainless steel
Matt safety glass
Silicone gasket
Reflector made of pure anodised aluminium
2 mounting holes \varnothing 5 mm
Distance apart 172 mm
2 cable entries for through-wiring of mains
supply cable \varnothing 7-10.5 mm
Connection terminal 2.5²
Earth conductor connection
LED power supply unit
220-240 V \sim 0/50-60 Hz
Safety class I
Protection class IP 65
Dust-tight and protection against water jets
Impact strength IK04
Protection against mechanical
impacts < 0.5 joule
 – Safety mark
 – Conformity mark
Weight: 1.5 kg

Inrush current

Inrush current: 5 A / 50 μ s
Maximum number of luminaires of this
type per miniature circuit breaker:

B 10A: 30 luminaires
B 16A: 50 luminaires
C 10A: 52 luminaires
C 16A: 85 luminaires

Lamp

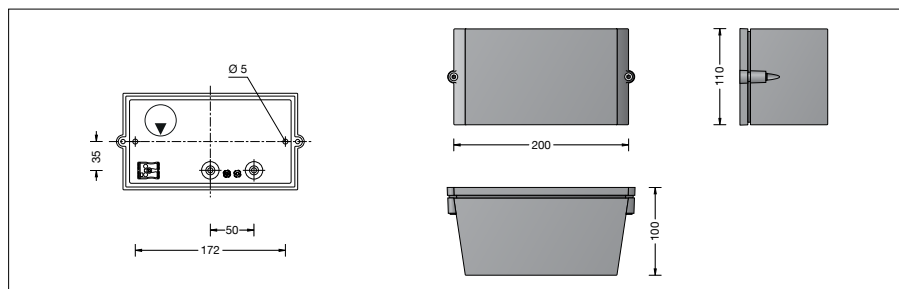
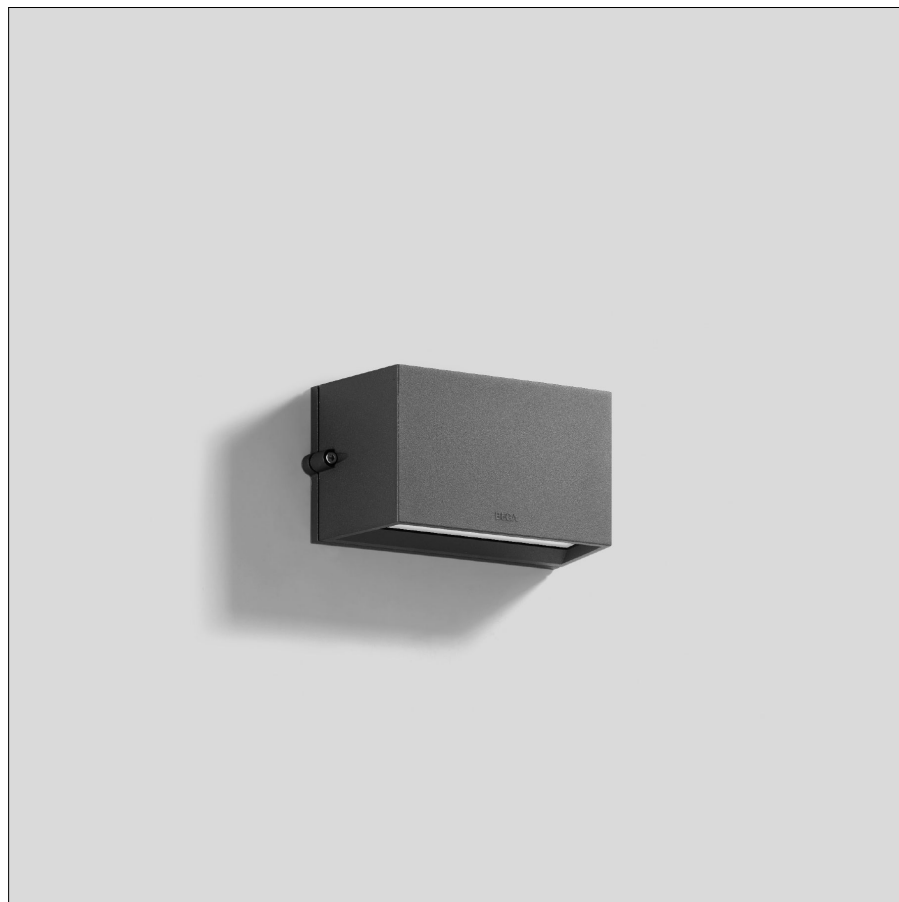
Module connected wattage 7.7 W
Luminaire connected wattage 10 W
Rated temperature $t_a = 25$ °C
Ambient temperature $t_{a \max} = 50$ °C

22 359 K3

Module designation LED-0269/830
Colour temperature 3000 K
Colour rendering index CRI > 80
Module luminous flux 1515 lm
Luminaire luminous flux 482 lm
Luminaire luminous efficiency 48,2 lm/W

22 359 K4

Module designation LED-0269/840
Colour temperature 4000 K
Colour rendering index CRI > 80
Module luminous flux 1560 lm
Luminaire luminous flux 496 lm
Luminaire luminous efficiency 49,6 lm/W



Service life · Ambient temperature

Rated temperature $t_a = 25$ °C
LED psu: > 50,000 h
LED module: > 200,000 h (L 80 B 50)
100,000 h (L 90 B 50)

Ambient temperature $t_{a \max} = 50$ °C (100 %)
LED psu: 50,000 h
LED module: > 200,000 h (L 80 B 50)
100,000 h (L 90 B 50)

Light technique

Luminaire data for the light planning program
DIALux for outdoor lighting, street lighting and
indoor lighting as well as luminaire data in
EULUMDAT- and IES-format you will find on the
BEGA web page www.bega.com.

Article No. 22 359

LED colour temperature optionally 3000 K
or 4000 K
3000 K – Article number + **K3**
4000 K – Article number + **K4**

Colour optionally graphite, white or silver
Graphite – Article number
White – Article number + **W**
Silver – Article number + **A**

Light distribution

