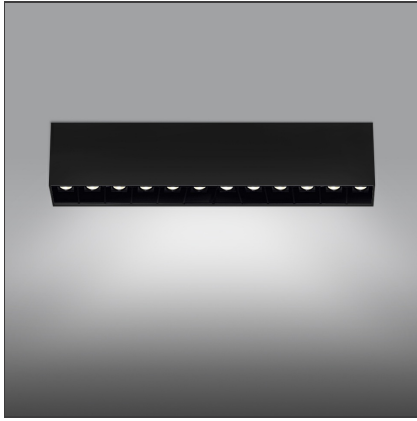


Sharp SMD - 33W 54° 3000K Dimmable DALI Black



IP20   Dimmerable: 

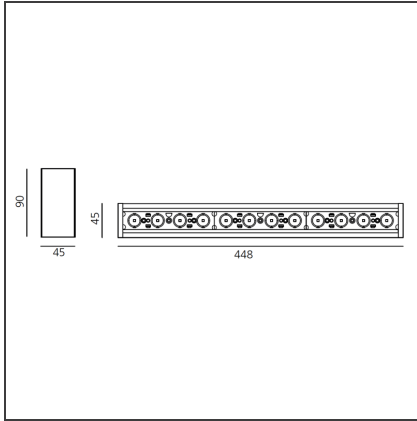
DESIGN BY

Carlotta de Bevilacqua

DESCRIPTION

High-efficiency patented optical system that combines polynomial perspective to an element that shields geometrically the angle of vision of the beam. High uniformity of illumination and full emission control. Complete absence of possible light flaws as stains and multi-shadows. Recessed depth 60 mm. Suitable for a ceiling of 1 to 25 mm. Available in trim versions, trimless and SMD.

TECHNICAL DRAWINGS



FEATURES

Article Code:	AF82204	Series:	Indoor
Colour:	Black		
Installation:	Ceiling		
Environment:	Indoor		

DIMENSIONS

Length:	cm 44.8
Width:	cm 4.5
Height:	cm 9

INCLUDED SOURCES

Category:	LED	Color temperature (K):	3000K
Number:	1		
Watt:	33W		
Type:	0		
Class:	A		

LUMINAIRE

Watt:	36W	Delivered lumens output (lm):	2337lm
		CCT:	3000K
		Efficiency:	73%
		Efficacy:	64.91lm/W
		CRI:	90
		Dimmable Typology:	Dali

Notes

Screen and CV SELV driver supplied separately.

ACCESSORIES

Screen 4x Black
AF95204



Screen 4x White
AF95201



Sharping wall grazer lens Kit (4pcs) - 26°x70° elliptical lenses kit. It has to be used on top of S 20° reflectors to get an elliptical beam (greter axis along the module lenght). It contains 4 lenses. AF06000