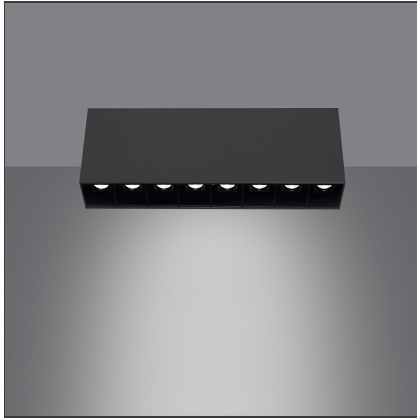


# Sharp SMD - 22W 54° 4000K Black



IP20  

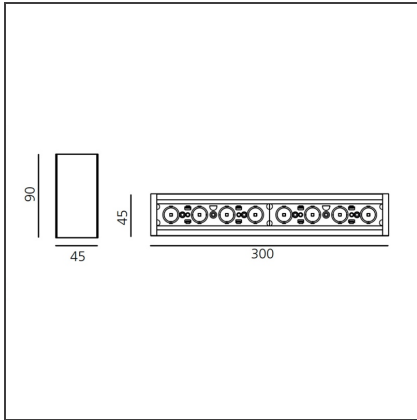
## DESIGN BY

Carlotta de Bevilacqua

## DESCRIPTION

High-efficiency patented optical system that combines polynomial perspective to an element that shields geometrically the angle of vision of the beam. High uniformity of illumination and full emission control. Complete absence of possible light flaws as stains and multi-shadows. Recessed depth 60 mm. Suitable for a ceiling of 1 to 25 mm. Available in trim versions, trimless and SMD.

## TECHNICAL DRAWINGS



## FEATURES

<b>Article Code:</b>	AF46504	<b>Series:</b>	Indoor
<b>Colour:</b>	Black		
<b>Installation:</b>	Ceiling		
<b>Environment:</b>	Indoor		

## DIMENSIONS

<b>Length:</b>	cm 30
<b>Width:</b>	cm 4,5
<b>Height:</b>	cm 9

## INCLUDED SOURCES

<b>Category:</b>	LED	<b>Color temperature (K):</b>	4000K
<b>Number:</b>	1		
<b>Watt:</b>	22W		
<b>Type:</b>	0		
<b>Class:</b>	A		

## LUMINAIRE

<b>Watt:</b>	24W	<b>Delivered lumens output (lm):</b>	1667lm
		<b>CCT:</b>	4000K
		<b>Efficiency:</b>	73%
		<b>Efficacy:</b>	69.47lm/W
		<b>CRI:</b>	90

## Notes

Screen and CV SELV driver supplied separately.

**ACCESSORIES**

Screen 4x Black  
AF95204



Screen 4x White  
AF95201

NO  
IMAGE  
AVAILABLE

Sharpening wall grazer lens Kit (4pcs) - 26°x70° elliptical lenses kit. It has to be used on top of S 20° reflectors to get an elliptical beam (greater axis along the module length). It contains 4 lenses. AF06000