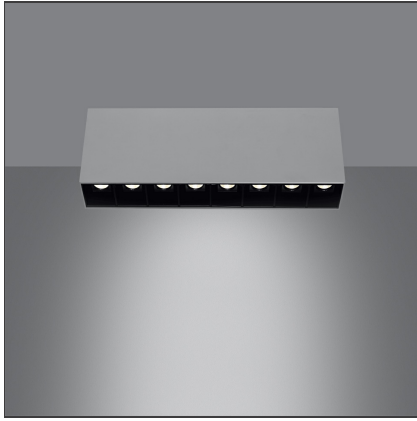


Sharp SMD - 22W 17° 3000K Dimmable DALI Silver



IP20   Dimmerable: 

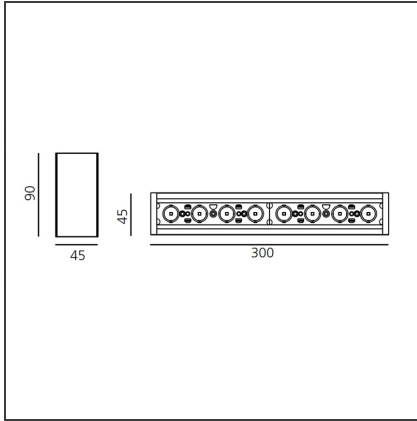
DESIGN BY

Carlotta de Bevilacqua

DESCRIPTION

High-efficiency patented optical system that combines polynomial perspective to an element that shields geometrically the angle of vision of the beam. High uniformity of illumination and full emission control. Complete absence of possible light flaws as stains and multi-shadows. Recessed depth 60 mm. Suitable for a ceiling of 1 to 25 mm. Available in trim versions, trimless and SMD.

TECHNICAL DRAWINGS



FEATURES

| | | | |
|----------------------|---------|----------------|--------|
| Article Code: | AF47005 | Series: | Indoor |
| Colour: | Silver | | |
| Installation: | Ceiling | | |
| Environment: | Indoor | | |

DIMENSIONS

| | |
|----------------|--------|
| Length: | cm 30 |
| Width: | cm 4,5 |
| Height: | cm 9 |

INCLUDED SOURCES

| | | | |
|------------------|-----|-------------------------------|-------|
| Category: | LED | Color temperature (K): | 3000K |
| Number: | 1 | | |
| Watt: | 22W | | |
| Type: | 0 | | |
| Class: | A | | |

LUMINAIRE

| | | | |
|--------------|-----|--------------------------------------|-----------|
| Watt: | 24W | Delivered lumens output (lm): | 1608lm |
| | | CCT: | 3000K |
| | | Efficiency: | 76% |
| | | Efficacy: | 66.99lm/W |
| | | CRI: | 90 |
| | | Dimmable Typology: | Dali |

Notes

Screen and CV SELV driver supplied separately.

ACCESSORIES

Screen 4x Black
AF95204



Screen 4x White
AF95201



Sharpening wall
grazer lens Kit
(4pcs) - 26°x70°
elliptical lenses kit.
It has to be used
on top of S 20°
reflectors to get
an elliptical beam
(greater axis along
the module
length). It contains
4 lenses.
AF06000