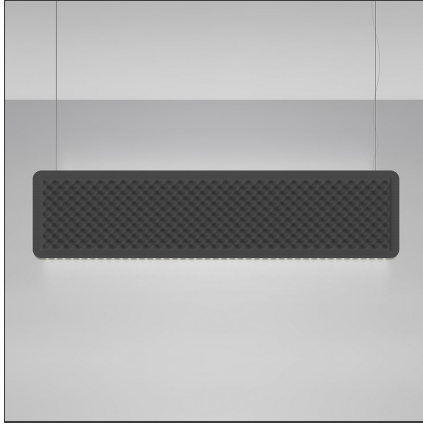


Eggboard Baffle - Direct + Indirect 1600x400 - 3000K - Grey



IP20  Dimmerable: 

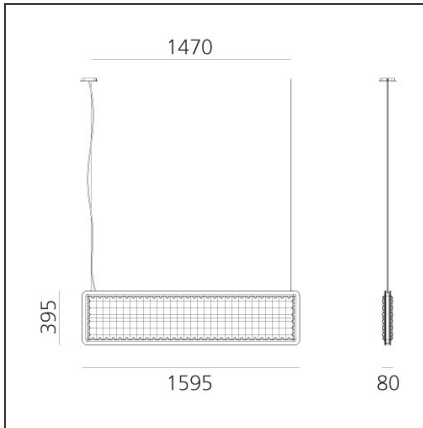
DESIGN BY

Progetto CMR - Giacobone & Roj

DESCRIPTION

The entire Eggboard collection is based on the principle of acoustic absorption to limit sound reverberation, particularly with respect to human voice frequencies. A vertical suspension and a number of panels with grazing light intended for wall or ceiling installation are the new elements making up the lightscape and ensuring perfect environmental quality. They both work freely on the lighting performances that can be combined with the acoustic element. The suspension version can combine indirect diffused light with direct controlled light thanks to the patented Eggboard Matrix optical units. In the wall and ceiling versions, grazing light can be associated on each side.

TECHNICAL DRAWINGS



FEATURES

Article Code:	BE00691	Series:	Indoor, 2018 Artemide Collection
Colour:	Grey		
Installation:	Suspension		
Environment:	Indoor		

DIMENSIONS

Length:	cm 160
Width:	cm 8
Height:	cm 40

INCLUDED SOURCES

Category:	LED	Color temperature (K):	3000K
Number:	1	CRI:	80
Watt:	18W		
Delivered lumens output (lm):	1532lm		
Type:	0		
Class:	A		
Category:	LED	Color temperature (K):	3000K
Number:	1	CRI:	80
Watt:	44W		
Delivered lumens output (lm):	4027lm		
Type:	0		
Class:	A		

LUMINAIRE

Watt:	18W + 44W	Delivered lumens output (lm):	1532lm + 4027lm
		CCT:	3000K
		CRI:	80
		Dimmable Typology:	Dali