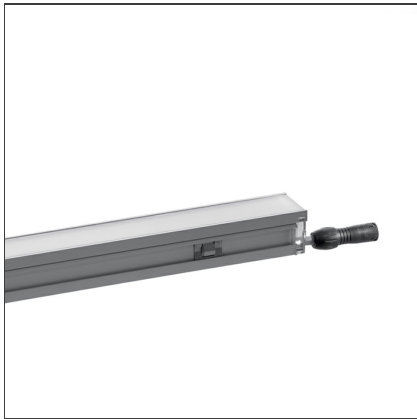


Algoritmo Floor Lighting Unit 600mm - LED 5W 4000K



IP67 

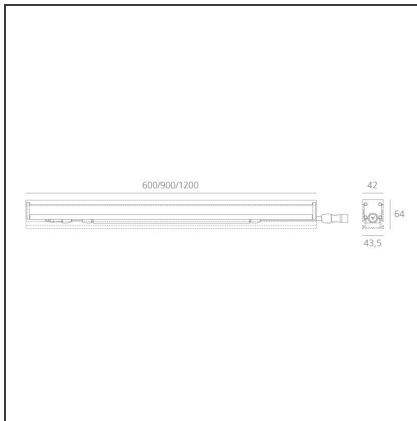
DESIGN BY

Carlotta de Bevilacqua, Paola di Arianello

DESCRIPTION

Floor recessed led lighting system for creating narrow light lines, ideal for structuring of spaces, for outlining the architecture or providing orientation lighting. IP67. Indoor use exclusively. Composed of lighting units with high-power RGB led or monochromatic led in warm white and neutral white, and recessing profile. The extremely compact dimensions allow a minimum visual impact on the architecture, and an easy use even in areas that are difficult to access. Lighting unit in extruded aluminium with anodized finish, sealed with a white opaline permanent tempered glass of 8 mm thick. 3 length options: 600mm, 900mm and 1200mm. Power supply and light management system to be ordered separately. Recessing profile in extruded aluminium to be ordered separately. Available in two lengths (1300mm and 4900mm) to be cut on site to the required configuration. Comes complete with removable cover in recyclable plastic material, that allows a perfectly flush installation. Static load resistance: 5000n. Lighting unit provided with quick-connector system for easy bridging connection. A proprietary low tension bus permits to cover long distances without further feedings. Not suitable for wall or ceiling installation. Complies with standard EN60598-1 and any other specific standards.

TECHNICAL DRAWINGS



FEATURES

Article Code:	M2931N01	Material:	Extruded Aluminium
Colour:	Anodised Natural	Series:	Indoor
Installation:	Floor	Emission:	Diffused
Environment:	Indoor		

DIMENSIONS

Length:	cm 60	Cutout shape:	Rectangular
Width:	cm 4.2	Impact Resistance:	IK08
Height:	cm 6.4	Glow Wire Test:	850
Weight:	kg 1.9		

INCLUDED SOURCES

Category:	LED	Color temperature (K):	4000K
Number:	1		
Watt:	5W		
Type:	0		
Class:	A		

LUMINAIRE

Watt:	5W	Delivered lumens output (lm):	85lm
Voltage:	220V-240V	CCT:	4000K
		Efficiency:	22%
		Efficacy:	17lm/W

Notes

Through wiring integrated LV. Required power supplies and light control to be ordered separately.

ACCESSORIES



Electronic power supply. IP67. Input voltage range: 90-264VAC / 47-63Hz. Output voltage: 48VDC. Protection against overcurrent, overvoltage, short-circuit and overtemperature, with automatic restart. - 240W. For feeding up to a total 225W. 244x68x39mm. M075100



Electrical connector (only for RGB LED) to couple wall-surface or floor-recessed LED Algoritmo System modules, powered through the same electrical circuit. M221900



ALGORITMO FLOOR - Fixing bracket (set of 4) in stainless steel. Can slide along the profile for easy positioning and installation. Height adjustment ranging 22mm. M221400



ALGORITMO FLOOR - Recessing profile in extruded aluminium. Can be cut on site to the required length. Length 1300mm. M221000



Control Interface. Form managing groups of Algoritmo System LED RGB and/or white LED/RGB Algoritmo Floor lighting units. Integrated sequencer for stand-alone operation with predefined color sequence. Possibility of master-slave configuration. DALI DMX light management systems are not included. - Compatible DALI 310X168X90 mm. IP67 M077000



Control Interface. Form managing groups of Algoritmo System LED RGB and/or white LED/RGB Algoritmo Floor lighting units. Integrated sequencer for stand-alone operation with predefined color sequence. Possibility of master-slave configuration. DALI DMX light management systems are not included. - Compatible DALI. Suitable for DIN rail mounting. 106x90x70 mm. IP20 M077200



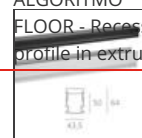
ALGORITMO FLOOR - Kit cavo di alimentazione. Comprende 1 cavo (3x0,75 mm²) di 15 m di lunghezza per collegare l'interfaccia di controllo all'apparecchio di



ALGORITMO FLOOR - Straight mechanical connector (set of 2) in stainless steel. For the mechanical connection of the recessing profiles. M221500



ALGORITMO FLOOR - Extension cable 3x0,75mm². Length 10m. M221700



ALGORITMO FLOOR - Recessing profile in extruded aluminium. Can be cut on site to the required length. Length 1300mm. M221000

testa + 1 tappo
per chiudere
l'apparecchio di
coda
M222100



ALGORITMO
FLOOR - Power
feed cable set.
Consists of one
5m long power
feed cable
(3x0,75mm²) for
connecting the
first luminaire to
the control
interface, + 1
blanking plug for
sealing the last
luminaire of the
row.
M221600



Electronic power
supply. IP67. Input
voltage range: 90-
264VAC / 47-63Hz.
Output voltage:
48VDC. Protection
against
overcurrent,
overvoltage, short-
circuit and
overtemperature,
with automatic
restart. - 320W.
For feeding up to
a total 300W.
252x90x44mm.
M076100

aluminium. Can be
cut on site to the
required length.
Length 4900mm.
M221100



ALGORITMO
FLOOR - Extension
cable 3x0,75mm².
Length 20m.
M221800



Electronic power
supply. IP67. Input
voltage range: 90-
264VAC / 47-63Hz.
Output voltage:
48VDC. Protection
against
overcurrent,
overvoltage, short-
circuit and
overtemperature,
with automatic
restart. 100W. For
feeding up to a
total 90W.
220x68x38mm.
M075000



Control Interface.
Form managing
groups of
Algoritmo System
LED RGB and/or
white LED/RGB
Algoritmo Floor
lighting units.
Integrated
sequencer for
stand-alone
operation with
predefined color
sequence.
Possibility of
master-slave
configuration.
DALI DMX light
management
systems are not
included. -
Compatible DALI
or DMX
310X168X90 mm.
IP67
M077100



Control Interface.
Form managing
groups of
Algoritmo System
LED RGB and/or
white LED/RGB
Algoritmo Floor
lighting units.
Integrated
sequencer for
stand-alone
operation with
predefined color
sequence.
Possibility of
master-slave
configuration.
DALI DMX light
management
systems are not
included. -
Compatible DALI
or DMX. Suitable
for DIN rail
mounting.
106x90x70 mm.
IP20
M077300



ALGORITMO
FLOOR - End cap
(set of 2) in
aluminium.
M221300



ALGORITMO
FLOOR - Kit cavo
di alimentazione.
Comprende 1 cavo
(3x0,75 mm²) di 10
m di lunghezza per
collegare
l'interfaccia di
controllo
all'apparecchio di
testa + 1 tappo
per chiudere
l'apparecchio di
coda
M222000