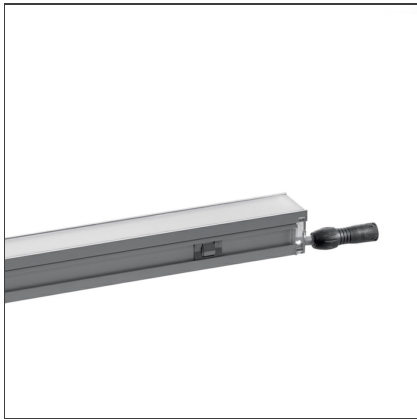


# Algoritmo Floor Lighting Unit 1200mm - LED RGB 18W



IP67 

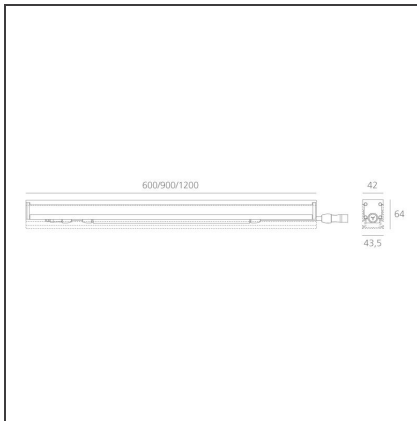
## DESIGN BY

Carlotta de Bevilacqua, Paola di Arianello

## DESCRIPTION

Floor recessed led lighting system for creating narrow light lines, ideal for structuring of spaces, for outlining the architecture or providing orientation lighting. IP67. Indoor use exclusively. Composed of lighting units with high-power RGB led or monochromatic led in warm white and neutral white, and recessing profile. The extremely compact dimensions allow a minimum visual impact on the architecture, and an easy use even in areas that are difficult to access. Lighting unit in extruded aluminium with anodized finish, sealed with a white opaline permanent tempered glass of 8 mm thick. 3 length options: 600mm, 900mm and 1200mm. Power supply and light management system to be ordered separately. Recessing profile in extruded aluminium to be ordered separately. Available in two lengths (1300mm and 4900mm) to be cut on site to the required configuration. Comes complete with removable cover in recyclable plastic material, that allows a perfectly flush installation. Static load resistance: 5000n. Lighting unit provided with quick-connector system for easy bridging connection. A proprietary low tension bus permits to cover long distances without further feedings. Not suitable for wall or ceiling installation. Complies with standard EN60598-1 and any other specific standards.

## TECHNICAL DRAWINGS



## FEATURES

<b>Article Code:</b>	M220200	<b>Material:</b>	Extruded Aluminium
<b>Colour:</b>	Anodised Natural	<b>Series:</b>	Indoor
<b>Installation:</b>	Floor	<b>Emission:</b>	Diffused
<b>Environment:</b>	Indoor		

## DIMENSIONS

<b>Length:</b>	cm 120	<b>Cutout shape:</b>	Rectangular
<b>Width:</b>	cm 4.2	<b>Impact Resistance:</b>	IK08
<b>Height:</b>	cm 6.4	<b>Glow Wire Test:</b>	850
<b>Weight:</b>	kg 2.5		

## INCLUDED SOURCES

<b>Category:</b>	LED	<b>Color temperature (K):</b>	RGB
<b>Number:</b>	1		
<b>Watt:</b>	18W		
<b>Type:</b>	0		
<b>Class:</b>	A		

## LUMINAIRE

<b>Watt:</b>	18 W
<b>Voltage:</b>	220V-240V

## Notes

Through wiring integrated LV. Required power supplies and light control to be ordered separately.

**ACCESSORIES**



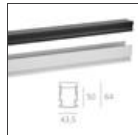
Electronic power supply. IP67. Input voltage range: 90-264VAC / 47-63Hz. Output voltage: 48VDC. Protection against overcurrent, overvoltage, short-circuit and overtemperature, with automatic restart. - 240W. For feeding up to a total 225W. 244x68x39mm. M075100



Electrical connector (only for RGB LED) to couple wall-surface or floor-recessed LED Algoritmo System modules, powered through the same electrical circuit. M221900



ALGORITMO FLOOR - Fixing bracket (set of 4) in stainless steel. Can slide along the profile for easy positioning and installation. Height adjustment ranging 22mm. M221400



ALGORITMO FLOOR - Recessing profile in extruded aluminium. Can be cut on site to the required length. Length 1300mm. M221000



Control Interface. Form managing groups of Algoritmo System LED RGB and/or white LED/RGB Algoritmo Floor lighting units. Integrated sequencer for stand-alone operation with predefined color sequence. Possibility of master-slave configuration. DALI DMX light management systems are not included. - Compatible DALI 310X168X90 mm. IP67 M077000



Control Interface. Form managing groups of Algoritmo System LED RGB and/or white LED/RGB Algoritmo Floor lighting units. Integrated sequencer for stand-alone operation with predefined color sequence. Possibility of master-slave configuration. DALI DMX light management systems are not included. - Compatible DALI. Suitable for DIN rail mounting. 106x90x70 mm. IP20 M077200



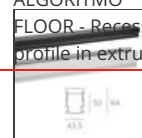
ALGORITMO FLOOR - Kit cavo di alimentazione. Comprende 1 cavo (3x0,75 mm<sup>2</sup>) di 15 m di lunghezza per collegare l'interfaccia di controllo all'apparecchio di



ALGORITMO FLOOR - Straight mechanical connector (set of 2) in stainless steel. For the mechanical connection of the recessing profiles. M221500



ALGORITMO FLOOR - Extension cable 3x0,75mm<sup>2</sup>. Length 10m. M221700



ALGORITMO FLOOR - Recessing profile in extruded aluminium. Can be cut on site to the required length. Length 1300mm. M221000

testa + 1 tappo  
per chiudere  
l'apparecchio di  
coda  
M222100

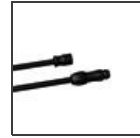


ALGORITMO  
FLOOR - Power  
feed cable set.  
Consists of one  
5m long power  
feed cable  
(3x0,75mm<sup>2</sup>) for  
connecting the  
first luminaire to  
the control  
interface, + 1  
blanking plug for  
sealing the last  
luminaire of the  
row.  
M221600



Electronic power  
supply. IP67. Input  
voltage range: 90-  
264VAC / 47-63Hz.  
Output voltage:  
48VDC. Protection  
against  
overcurrent,  
overvoltage, short-  
circuit and  
overtemperature,  
with automatic  
restart. - 320W.  
For feeding up to  
a total 300W.  
252x90x44mm.  
M076100

aluminium. Can be  
cut on site to the  
required length.  
Length 4900mm.  
M221100



ALGORITMO  
FLOOR - Extension  
cable 3x0,75mm<sup>2</sup>.  
Length 20m.  
M221800



Electronic power  
supply. IP67. Input  
voltage range: 90-  
264VAC / 47-63Hz.  
Output voltage:  
48VDC. Protection  
against  
overcurrent,  
overvoltage, short-  
circuit and  
overtemperature,  
with automatic  
restart. 100W. For  
feeding up to a  
total 90W.  
220x68x38mm.  
M075000



Control Interface.  
Form managing  
groups of  
Algoritmo System  
LED RGB and/or  
white LED/RGB  
Algoritmo Floor  
lighting units.  
Integrated  
sequencer for  
stand-alone  
operation with  
predefined color  
sequence.  
Possibility of  
master-slave  
configuration.  
DALI DMX light  
management  
systems are not  
included. -  
Compatible DALI  
or DMX  
310X168X90 mm.  
IP67  
M077100



Control Interface.  
Form managing  
groups of  
Algoritmo System  
LED RGB and/or  
white LED/RGB  
Algoritmo Floor  
lighting units.  
Integrated  
sequencer for  
stand-alone  
operation with  
predefined color  
sequence.  
Possibility of  
master-slave  
configuration.  
DALI DMX light  
management  
systems are not  
included. -  
Compatible DALI  
or DMX. Suitable  
for DIN rail  
mounting.  
106x90x70 mm.  
IP20  
M077300



ALGORITMO  
FLOOR - End cap  
(set of 2) in  
aluminium.  
M221300



ALGORITMO  
FLOOR - Kit cavo  
di alimentazione.  
Comprende 1 cavo  
(3x0,75 mm<sup>2</sup>) di 10  
m di lunghezza per  
collegare  
l'interfaccia di  
controllo  
all'apparecchio di  
testa + 1 tappo  
per chiudere  
l'apparecchio di  
coda  
M222000