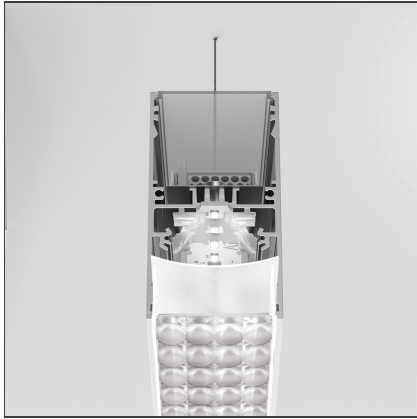


**A.39 Suspension/Ceiling - 2368mm - Direct Emission - 4000K - DALI - White**



IP20  Dimmerable: + -

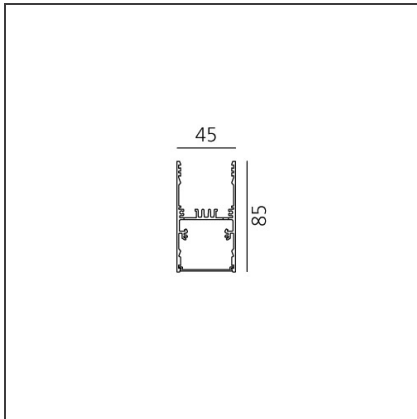
**DESIGN BY**

Carlotta de Bevilacqua

**DESCRIPTION**

Controlled emission LED optic System. UGR index control and 65° luminance (EN 12464). Patent-pending proprietary optic system made by a thin black square-meshed grid and by a system of square plano-convex lenses of appropriate beam angle. The internal part of the grid is white painted and has a high reflection coefficient, so that the light incident on the grid is retrieved within the A.39 body. A net 'cut off' at the required angle is obtained through this system. The convex profile of the lens is designed with images optic techniques, so that the emission is limited within the 65° required by standard EN 12464. UGR<19 Angle luminance equals to 65° and beyond: <3,000 cd/m2. The grid positioned over the lenses allows only the rays falling into the required output angular limits to be incident to the lenses. The rays beyond these limits are recovered and redirected inside the light box (if the ray is incident to the white surface) or cancelled (if the ray is incident to the black edge).

**TECHNICAL DRAWINGS**



**FEATURES**

<b>Article Code:</b>	AT15601	<b>Series:</b>	Indoor
<b>Colour:</b>	White		
<b>Installation:</b>	Suspension, Ceiling		

**DIMENSIONS**

<b>Length:</b>	cm 237
<b>Width:</b>	cm 4.5
<b>Height:</b>	cm 8.5

**INCLUDED SOURCES**

<b>Category:</b>	LED	<b>Color temperature (K):</b>	4000K
<b>Number:</b>	1		
<b>Watt:</b>	66W		
<b>Type:</b>	0		
<b>Class:</b>	A		

**LUMINAIRE**

<b>Watt:</b>	66W	<b>Delivered lumens output (lm):</b>	4087lm
		<b>CCT:</b>	4000K
		<b>Efficiency:</b>	42%
		<b>Efficacy:</b>	61.92lm/W
		<b>CRI:</b>	80
		<b>Dimmable Typology:</b>	Dali

**Notes**

Screen supplied separately. Screen quantity to order: 2x AT09900.

**ACCESSORIES**

NO  
IMAGE  
AVAILABLE

A.39 - Mechanical  
joint including 1  
suspension cable  
AT09500



NO  
IMAGE  
AVAILABLE

A.39 - Ceiling  
bracket and  
mechanical joint  
AT09501



NO  
IMAGE  
AVAILABLE

End cap kit (2x) -  
White  
AT09801



NO  
IMAGE  
AVAILABLE

A.39 - End Ceiling  
Bracket (2x)  
AT09502



Algorithmo System  
LED - Optics -  
Controlled  
Emission -  
1184mm  
M186700



NO  
IMAGE  
AVAILABLE

A.39 - Dimmable  
Feeding kit  
including 2  
suspension cables  
(5 poles) 2000m  
(H)  
AT10500