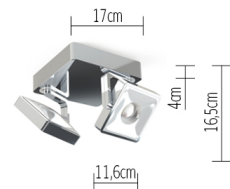
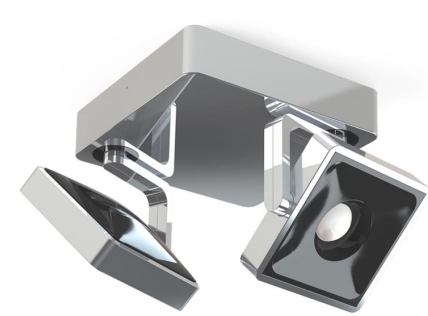


STUDIO SPOT DUO 17x17 alu pol/black 2700K

SP10-8



TECHNICAL SPECIFICATIONS

Lamp holder	LED
Mounting method	ceiling-mounted (surface)
Light emission	direct
Light distribution	symmetric
Luminaire luminous flux	2x 650 lm
Colour temperature	2700 K
Colour rendering index (CRI)	> 90
White impression	warm white
Rated voltage (range)	220-240 V / 120 V
Power frequency	50/60 Hz
Power consumption (maximum)	2x 16 W
Surface	polished
Colour of covering	black
Housing material	aluminium
Type of lamp control gear	Driver
Ballast included	Yes
Protection class	II
Connection cable (number of cores)	3
Number of lampheads	2
Energy efficiency	A - A++
Dimmable	Yes
Type of Dimmer	phase rotary dimmer
Width	170 mm
Height	172 mm
Head adjustable	Yes
	polished
	aluminium