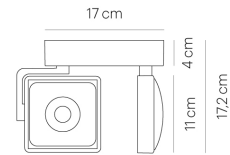
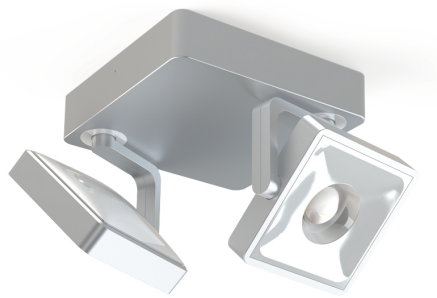


# STUDIO SPOT DUO 17x17 satin/white 3500 K

SP10-7



## TECHNICAL SPECIFICATIONS

Lamp holder	LED
Mounting method	ceiling-mounted (surface)
Light emission	direct
Light distribution	symmetric
Level of light output efficiency	100 %
Luminaire luminous flux	2x 689 lm
Colour temperature	3500 K
Colour rendering index (CRI)	>80
White impression	cool white
Rated voltage (range)	220-240 V / 120 V
Power frequency	50/60 Hz
Power consumption (maximum)	2x 15 W
Surface	satined
Colour of covering	white
Housing material	aluminium
Type of lamp control gear	Driver
Ballast included	Yes
Protection class	II
Connection cable (number of cores)	3
Number of lampheads	2
Lampshade material	plastic
Energy efficiency	A - A++
Dimmable	Yes
Type of Dimmer	phase rotary dimmer
Width	170 mm
Height	172 mm
Head adjustable	Yes
	powder-coated
	aluminium

**tobias grau**