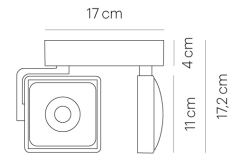
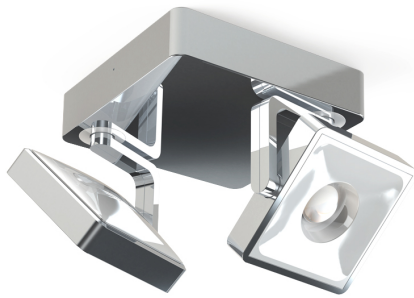


# STUDIO SPOT DUO 17x17 alu pol/white 2700 K

SP10-1



## TECHNICAL SPECIFICATIONS

|                                    |                           |
|------------------------------------|---------------------------|
| Lamp holder                        | LED                       |
| Mounting method                    | ceiling-mounted (surface) |
| Light emission                     | direct                    |
| Light distribution                 | symmetric                 |
| Level of light output efficiency   | 100 %                     |
| Luminaire luminous flux            | 2x 650 lm                 |
| Colour temperature                 | 2700 K                    |
| Colour rendering index (CRI)       | > 90                      |
| White impression                   | warm white                |
| Rated voltage (range)              | 220-240 V / 120 V         |
| Power frequency                    | 50/60 Hz                  |
| Power consumption (maximum)        | 2x 16 W                   |
| Surface                            | polished                  |
| Colour of covering                 | white                     |
| Housing material                   | aluminium                 |
| Type of lamp control gear          | Driver                    |
| Ballast included                   | Yes                       |
| Protection class                   | II                        |
| Connection cable (number of cores) | 3                         |
| Number of lampheads                | 2                         |
| Lampshade material                 | plastic                   |
| Energy efficiency                  | A - A++                   |
| Dimmable                           | Yes                       |
| Type of Dimmer                     | phase rotary dimmer       |
| Width                              | 170 mm                    |
| Height                             | 172 mm                    |
| Head adjustable                    | Yes                       |
| Net weight                         | 2,5 kg                    |
|                                    | polished                  |
|                                    | aluminium                 |

**tobias grau**