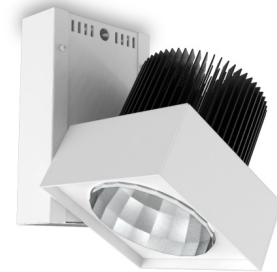
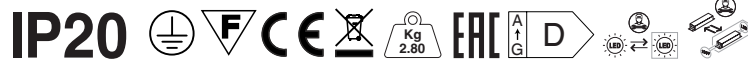
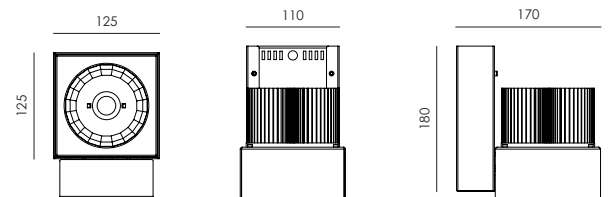


- Ceiling mounted LED projector
- Aluminium body with polyester powder paint resistant to corrosion
- Aluminium high performance reflector
- Adjustable tilt movements
- Power supply integrated in the product body
- Maximum permissible ambient temperature + 50 °C



- *Proiettore LED a plafone*
- *Corpo in alluminio con verniciatura in polvere di poliestere resistente alla corrosione*
- *Parabola in alluminio ad alta riflessione*
- *Orientabile in senso verticale*
- *Alimentatore integrato nel corpo del prodotto*
- *Temperatura ambiente massima ammissibile +50 °C*



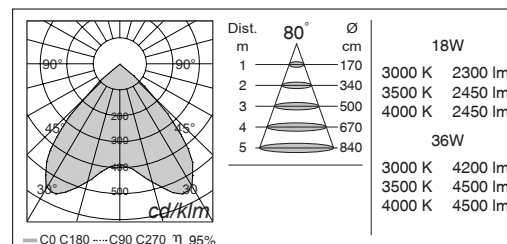
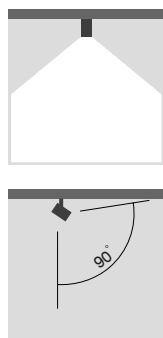
Lamp / Lampada 1 LED COB CREE	Input / Alimentazione 220/240V 50/60Hz	Power / Potenza 18 / 36 W	Color Tolerance/ Tolleranza Cromatica 2-SDCM / 3-SDCM	CRI / CRI 80 MIN
-------------------------------------	--	---------------------------------	---	------------------------



NEXO LUCE (Factory)  
Strada Mirabella, 10  
46040 Cavriana (MN), ITALY  
T +39 0376 771513 F +39 0376 772235  
sales@nexoluce.com www.nexoluce.com

Made in Italy

© Nexo Luce, a company incorporated in Italy. The logo and the name are the property of Nexo Luce SRL. The present datasheet and its content in whole or in part are the property of Nexo Luce SRL. All rights reserved. We reserve the right to change details and specifications without prior written notice.



MAIN CODE CODICE BASE	RELEASE EDIZIONE	LIGHT COLOR COLORE LUCE	WATT WATT	OPTIC OTTICA	CONTROL CONTROLLO	FRAME COLOR COLORE
<b>2060</b>	<b>.4</b>	<b>B</b> 3000K	<b>.18</b> 18W	<b>AE</b> 80°	<b>1</b> ON/OFF	<b>BS</b> WHITE / BIANCO
		<b>C</b> 4000K	<b>.36</b> 36W		<b>8</b> DIMMER 1-10V	<b>BT</b> BLACK/ NERO
		<b>F</b> 3500K				
		* others on request / altri su richiesta				

CODE EXAMPLE : Projector with warm white light color at 3000K, 18W, 80° optic, ON/OFF control, frame white color  
2060.4B.18AE1BS

ESEMPIO DI CODIFICA : Proiettore con luce calda a 3000K, 18W, ottica 80°, controllo ON/OFF, colore bianco  
2060.4B.18AE1BS

NEXO LUCE (Factory)  
Strada Mirabella, 10  
46040 Cavriana (MN), ITALY  
T +39 0376 771513 F +39 0376 772235  
sales@nexoluce.com www.nexoluce.com

Made in Italy