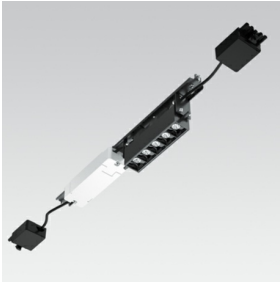


Last information update: May 2018



**Adjustable 5 - cell module - LED - Incorporated DALI dimmable power supply - Warm white - Beam 12°**

**Product code**  
MU83

**Technical description**

Adjustable linear module with LEDs, specifically designed to be housed in the Laser Blade System channel. The steel coupling plate includes the lighting group and the operating components. Module with 5 lighting cells, in die-cast aluminium, adjustable with a practical extraction and rotation system with max inclination +/- 45°. Metallised thermoplastic high definition optics, integrated in a rear position in the black anti-glare screen; the structure of the optical system prevents a pinpoint effect, allowing precise, circular light distribution and emission with controlled luminance.

**Installation**

Double rotating pin blocking system with return spring to facilitate the insertion in the profile seating. Can be manoeuvred with a screwdriver.

**Dimension (mm)**  
599x93

**Colour**  
Black (04)

**Weight (Kg)**  
0.9

**Mounting**  
ceiling recessed

**Wiring**

The module is fitted with connectors on both sides for connecting with subsequent modules. For connections at greater distances, there are accessory connectors (code MXN6 - cables not included).

Complies with EN60598-1 and pertinent regulations



**Product configuration: MU83**

**Product characteristics**

Total lighting output [Lm]: 671.5  
Total power [W]: 13  
Luminous efficacy [Lm/W]: 51.7  
Life Time: 50,000h - L90 - B10 (Ta 25°C)

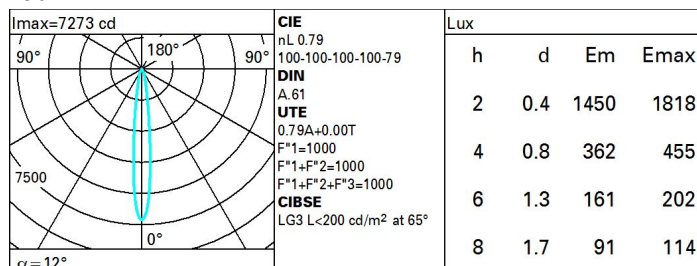
Total luminous flux at or above an angle of 90° [Lm]: 0  
Emergency luminous flux [Lm]: /  
Voltage [V]: -  
Number of optical assemblies: 1

**Optical assembly Characteristics Type 1**

Light Output Ratio (L.O.R.) [%]: 79  
Lamp code: LED  
ZVEI Code: LED  
Nominal power [W]: 10  
Nominal luminous [Lm]: 850  
Lamp maximum intensity [cd]: /  
Beam angle [°]: 12°

Number of lamps for optical assembly: 1  
Socket: /  
Ballast losses [W]: 3  
Colour temperature [K]: 3000  
CRI: 95  
Wavelength [Nm]: /  
MacAdam Step: 3

**Polar**



**Utilisation factors**

R	77	75	73	71	55	53	33	00	DRR
K0.8	71	68	65	63	67	65	64	62	78
1.0	75	71	69	67	71	68	68	66	83
1.5	78	76	74	72	75	73	72	70	89
2.0	81	79	77	76	78	76	76	73	93
2.5	82	81	80	79	80	79	78	76	96
3.0	83	82	81	81	81	80	79	77	98
4.0	84	83	83	82	82	82	80	79	99
5.0	84	84	84	83	83	82	81	79	100

---