

September 2012

Trimmer - Spotlight w/power supply unit 70W HI-PAR 30

Attention! Code out of production

Product code:

8579

Technical description:

Luminaire for 1x70W HI-PAR 30 discharge lamp. Made up of power supply box, adapter for mains voltage electrified tracks, support arm and optical assembly. The power supply box is composed of a diecast aluminium bearing base with the electrical components for discharge lamps, moulded polycarbonate cover with 850° NF C20 paint finish, aluminium mechanical fixing system with screw and helicoidal spring for correct positioning. The support arm is made up of two diecast aluminium elements joined with M3 screws and houses the power supply cable for the lamp. The diecast aluminium optical assembly with PPS multigrooves is joined to the lower end of the arm with M5 screws on conic steel washers. It can be inclined by 100° with screw locking device and rotated by 340° about the vertical axis with continuous friction and screw locking device.

Installation:

On iGuzzini mains voltage electrified tracks. Compatible with Erco, Nokia, Staff and Hoffmaister tracks.

Dimension:

D =140mm L =328mm H =300mm

Colour:

White (01)|Black (04)|Grey (15)

Weight [Kg]:

2,7

Mounting:

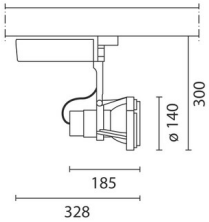
Three circuit track

Wiring:

Electrical components for discharge lamps contained inside the box integrated to the luminaire.

Notes:

For the photometric data of the luminaire refer to the photometric characteristics of the light sources used.



Complies with EN605981 and pertinent regulations

