

September 2012

**Gabbiano - Spotlight with control gear 150W HIT-DE****Attention! Code out of production****Product code:**

8522

**Technical description:**

Floodlight for indoor lighting composed of: high-resistance cradle made of thermoplastics reinforced with fibre glass; optical assembly located in the cradle, made in die cast aluminium with PPS end caps; superpure aluminium reflector; mechanical blocking system for directing the optical assembly, located at one end of the cradle. Complete with hardened sodium calcium protection glass. Separate control gear-holding box made of technopolymer with an internal frame in extruded aluminium and two end caps made of thermo-resistant plastic material. Complete with U.V. filter. IP40 for optical assembly with optional glass diffusers.

**Installation:**

Fitted to electrified track through tri-phase adapter. The adapter is provided with an adjustable friction device which allows the floodlight to be fitted in vertical position.

**Dimension:**

L =447mm H =359 mm

**Colour:**

White (01)|Grey (15)

**Weight [Kg]:**

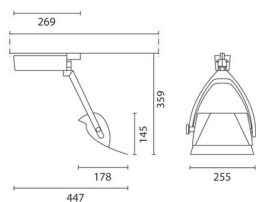
4,12

**Mounting:**

Three circuit track

**Wiring:**

PTFE (polyetrafluorethilene) cables. Complete with capacitor and thermal protection device.



Complies with EN605981 and pertinent regulations

