

September 2012

Gabbiano - Floodlight with control gear 70W HIT-DE**Attention! Code out of production****Product code:**

8521

Technical description:

Indoor spotlight made up of fibre glass reinforced thermoplastic cradle, optical assembly located in the cradle, made in die cast aluminium with PPS end caps, lamp-support ring, diecast lampholder cover plate and mechanical locking system for optical assembly setting situated at one end of the cradle. Control gear box made up of a diecast aluminium bearing base with the electrical components for discharge lamps, moulded polycarbonate cover with 850° NF C20 paint finish, aluminium mechanical fixing system with screw and helicoidal spring for correct positioning. IP40 for optical assembly with optional glass diffusers.

Installation:

Fitted to electrified track through tri-phase adapter. The adapter is provided with an adjustable friction device which allows the floodlight to be fitted in vertical position.

Dimension:

L =447mm H =359 mm

Colour:

White (01)|Grey (15)

Weight [Kg]:

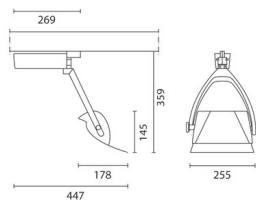
3,36

Mounting:

Three circuit track

Wiring:

PTFE (polyetrafluorethilene) cables. Complete with capacitor and thermal protection device.



Complies with EN605981 and pertinent regulations

