

September 2012

**Lux - 50W 230V QPAR51****Attention! Code out of production - 2012****Product code:**

8212

**Technical description:**

Adjustable ceiling-mounting projector made of die-cast aluminium. 50WPAR16main voltage halogen lamp. An accessory-holder ring can hold a variety of accessories and up to three flat accessories at once. One external accessory can be also applied: either an asymmetric screen, directional flaps, or an anti-glare screen. All accessories can be rotated up to 360° with respect to the longitudinal axis of the optical compartment. Easy installation via a bayonet system and retention cables. Quick-connecting terminals require no tools. Fitting equipped with electronic transformer for low voltage halogen lamps.

**Installation:**

Ceiling/wall.

**Dimension:**

D 78 mm - H 173 mm

**Colour:**

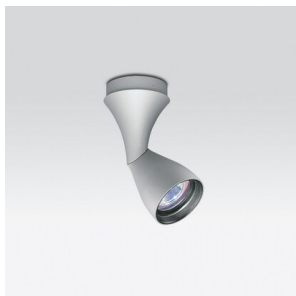
White (01)|Grey (15)

**Weight [Kg]:**

0,5

**Mounting:**

Ceiling surface



Complies with EN605981 and pertinent regulations

