

September 2012

**Action - General lighting module up/down with electronic control gear T16x35/49W****Product code:**

6609

**Technical description:**

Suspended, surface-mounted or recessed lighting system designed for fluorescent light sources with up/down light emission. The product permits downlight-only emission by means of a top cover (to be ordered separately) made of plastic material. The modules are complete with terminal boards and cables for through wiring. Ready for switch-on of 3 groups of fittings. The product produces general light and has an extruded polycarbonate screen with diffusing opal surface subjected to anti-UV treatment. The diffuser screens can be removed without tools for ordinary maintenance operations. The structure of the fitting is made of painted extruded aluminium; the lamp-holding supports are made of galvanised painted sheet steel; and the end caps (to be ordered separately) of polycarbonate. The top protection screen (to be ordered separately) is made of transparent polycarbonate subjected to anti-UV treatment. The power-supply cable is transparent and the cables are subjected to antioxidant treatment. The modules can be combined by means of direct and corner 90° couplings as well as structural modules (to be ordered separately). The suspension system (to be ordered separately) has sheet-steel supporting plates with polycarbonate covering bases and steel suspension cables with a millimetric adjustment system (applied to the modules). Ceiling application by means of an aluminium structure (to be ordered separately). Recessed and semi-recessed installation system by means of a structure designed for application to false ceilings 12.5mm and 15mm thick, with concealed rim (to be ordered separately).

**Installation:**

Suspended, surface-mounted, semi-recessed or recessed installation.

**Dimension:**

130x65mm L 1477mm

**Colour:**

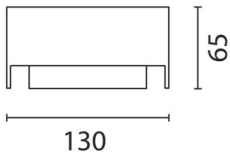
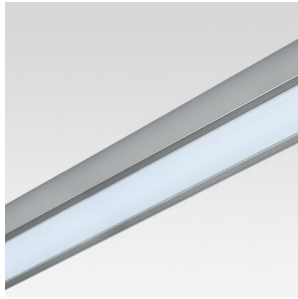
White (01)|Grey (15)

**Mounting:**

Ceiling pendant|Ceiling recessed|Ceiling surface

**Wiring:**

The product is equipped with multiwatt 2x35/49W T16 electronic ballast. It is designed for through wiring by means of special terminal boards housed inside the aluminium profile. The system is able to switch on three groups of fittings separately.



Complies with EN605981 and pertinent regulations

