

September 2012

**Lumen - Projector 100W PAR 30S****Product code:**

6424

Technical description:

Adjustable projector with adaptor for installation on mains voltage tracks made of aluminium and thermoplastic material. Version with PAR 30 100W mains voltage halogen lamp. The fitting can rotate 360° around the vertical axis, with inclinations of 0°/90° with respect to the horizontal plane, with mechanical blocking mechanisms for precision aim on the vertical axis and horizontal plane. IP40 for optical assembly.

Installation:

Electrified track or ceiling/wall installation.

Dimension:

L 135 mm - D 100 mm - H 215 mm

Colour:

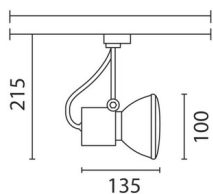
White (01)|Grey/Black (74)

Mounting:

Three circuit track

Wiring:

Mains voltage fitting.



Complies with EN605981 and pertinent regulations

