

September 2012

Lumen - with electronic control gear 35W HIT (CDM-R 111)**Product code:**

6390

Technical description:

Adjustable projector with adaptor for installation on mains voltage tracks made of aluminium and thermoplastic material. Version with CDM-R111 35W discharge lamp has a polycarbonate component compartment located next to the track and connected to the adaptor. The fitting can rotate 360° around the vertical axis, with inclinations of 0°/90° with respect to the horizontal plane, with mechanical blocking mechanisms for precision aim on the vertical axis and horizontal plane. IP40 for optical assembly with optional glass diffusers.

Installation:

Electrified track or ceiling/wall installation.

Dimension:

L 126 mm - D 111 mm - H 255 mm

Colour:

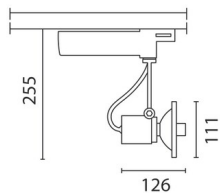
White (01)|Grey/Black (74)

Mounting:

Three circuit track

Wiring:

Electronic components for discharge lamps contained inside the special box that is equipped with the fitting.



Complies with EN605981 and pertinent regulations

