

September 2012

## Lineup - Module with digital dimmable electronic (DALI) control gear

**Product code:**

5830

**Technical description:**

Lighting fitting recessed into the false ceiling for fluorescent light sources with general light emission. The structure and removable end caps are made of painted galvanised sheet steel and the flow director of painted galvanised sheet steel. The diffusing opaline polycarbonate diffuser screen is subjected to anti-UV treatment. The installation brackets are made of galvanised sheet steel. The fitting is treated with RAL9016 liquid painting. The diffuser screen has a fall-prevention system made up of a double steel safety cable. The modules can be combined to make continuous lines.

**Installation:**

Installation is carried out either by special brackets or on the surface of a modular false ceiling. No tools are needed to tighten the brackets, which are suitable for false ceilings 1 to 35 mm thick. The hole for the recessed product is 100x1487 mm.

**Dimension:**

110x1198

**Colour:**

White (01)

**Weight [Kg]:**

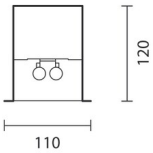
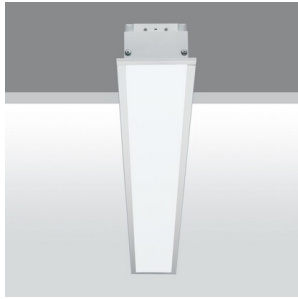
3

**Mounting:**

Ceiling recessed

**Wiring:**

Fitting complete with digital dimmable electronic control gear (DALI). The fast-coupling terminal boards for electrical connection can be accessed both from the back of and from inside the product. The product is designed for through wiring and comes equipped with switch dim - regulation also by means of standard electronic button. Occupies 1 DALI address.



N = numero apparecchi

Complies with EN605981 and pertinent regulations

