

September 2012

Lineup - Module with electronic control gear**Product code:**

5823

Technical description:

Lighting fitting recessed into the false ceiling for fluorescent light sources with general light emission. The structure and removable end caps are made of painted galvanised sheet steel and the flow director of painted galvanised sheet steel. The diffusing opaline polycarbonate diffuser screen is subjected to anti-UV treatment. The installation brackets are made of galvanised sheet steel. The fitting is treated with RAL9016 liquid painting. The diffuser screen has a fall-prevention system made up of a double steel safety cable. The modules can be combined to make continuous lines.

Installation:

Installation is carried out either by special brackets or on the surface of a modular false ceiling. No tools are needed to tighten the brackets, which are suitable for false ceilings 1 to 35 mm thick. The hole for the recessed product is 100x1187 mm.

Dimension:

110 x 1198

Colour:

White (01)

Weight [Kg]:

3

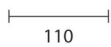
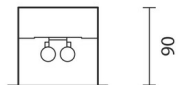
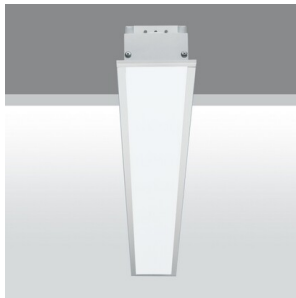
Mounting:

Ceiling recessed

Wiring:

Electronic control gear. The fast-coupling terminal boards for electrical connection can be accessed both from the back of and from inside the product. The fitting is designed for through wiring.

Complies with EN605981 and pertinent regulations



100x(1174/1474xN+13)

N = numero apparecchi

