

September 2012

**Lineup - Module with electronic control gear****Product code:**

5800

**Technical description:**

Lighting fitting recessed into the false ceiling for fluorescent light sources with asymmetric light emission of wall-washer kind. The structure and removable end caps are made of painted galvanised sheet steel, the lamp cover of painted aluminium, and the reflector of superpure aluminium. The installation brackets are made of galvanised sheet steel. The fitting is treated with RAL9016 liquid painting. The lamp cover has a fall-prevention system made up of a double steel safety cable. The modules can be combined to make continuous lines.

**Installation:**

Installation is carried out either by special brackets or on the surface of a modular false ceiling. No tools are needed to tighten the brackets, which are suitable for false ceilings 1 to 35 mm thick. The hole for the recessed product is 100x1187 mm.

**Dimension:**

110 x 1198

**Colour:**

White (01)

**Weight [Kg]:**

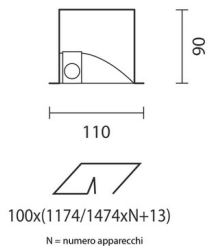
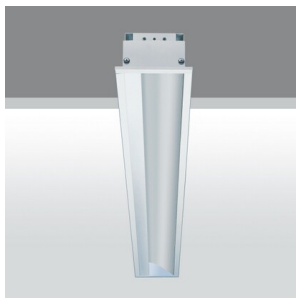
2,4

**Mounting:**

Ceiling recessed

**Wiring:**

Electronic control gear. The fast-coupling terminal boards for electrical connection can be accessed both from the back of and from inside the product. The fitting is designed for through wiring.



Complies with EN605981 and pertinent regulations

