

September 2012

MaxiWoody - Projector for application on pole-mounted systems 150 W HIT-DE - 150 W HST-DE Road Optic**Product code:**

5683

Technical description:

The fitting can be applied on pole-mounted systems. It is made up of painted die-cast aluminium with closing glass fixed to the frame. The body houses a polished anodised 99.98% superpure aluminium reflector. The optical assembly is equipped with a silicone-front closing glass that guarantees liquid tightness. Special openings in the frame let rain water run off. The fitting has a double cable-clamp (M24x1.5) for through wiring. On MaxiWoody pole-mounted systems it can be adjusted about the vertical axis by means of a bracket with graduated scale for adjustment to 10° and mechanical locking devices guaranteeing the stability of the light beam. The iGuzzini installation and maintenance protocol simplifies installation. The decompression valve facilitates access to the optical assembly by eliminating the problem of lower internal pressure. All components are fixed on a single plate by means of captive screws, enabling rapid non-routine maintenance operations. The painting process is carried out using acrylic paint (maximum protection against UV solar radiation) of liquid kind (maximum protection against atmospheric agent).

Installation:

The fitting can be installed in the FrameWoody and CityWoody systems

Dimension:

D=380 mm h= 352 mm

Colour:

Grey (15)

Weight [Kg]:

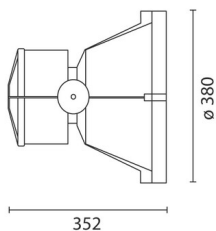
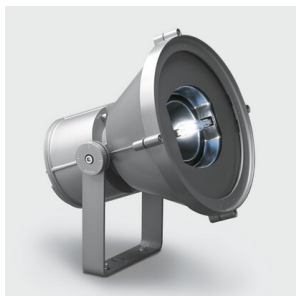
14,2

Mounting:

Ceiling pendant

Notes:

Available accessories: refractor for elliptical distribution of the light flow, coloured filters, round louver, and accessory retention cable.



Complies with EN605981 and pertinent regulations

