

September 2012

**Metro - Projector with electronic control gear 150 W HIT Spot**

**Product code:**

4894

**Technical description:**

Projector for interiors made up of reinforced-plastic cradle, lamp-holding ring and diecast-aluminium lamp-holding cover. Application to electrified track by three-phase adaptor. The product comes complete with separate component-holding box fixed to the adaptor close to the track. The mechanical locking system to point the light is placed at one end of the cradle and permits changing the inclination of the projector by about 100° perpendicularly to the horizontal axis. The projector can also be rotated by about 340° around the vertical axis. Several accessories may be installed by a special ring to be ordered separately. IP40 for optical assembly with optional glass diffusers.

**Installation:**

Fitted to electrified track through a three-phase adaptor.

**Dimension:**

349x351mm

**Colour:**

White (01)|Grey/Black (74)

**Weight [Kg]:**

2,13

**Mounting:**

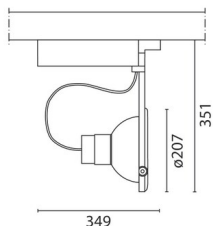
Three circuit track

**Wiring:**

Electronic wiring inside the component-holding box and joined to the adaptor.

**Notes:**

Complete with protection glass.



Complies with EN605981 and pertinent regulations

