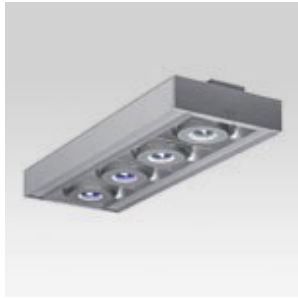


September 2012

**IGZCestello FL -****Attention! Code out of production****Product code:**

3180

Technical description:

Suspended lighting system with 4 optical assemblies designed for halogen light sources. The structure of the fitting is made of painted extruded aluminium, the lamp-holding supports are made of galvanised painted sheet steel, and the end caps of polycarbonate. The power-supply cable is transparent and the cables are subjected to antioxidant treatment. The modules can be combined by means of direct and corner (90°) couplings as well as structural modules. The lamps are located on diecast-aluminium adjustable rings by means of technopolymer cardan joints (rotation $\pm 45^\circ$ with respect to the vertical and horizontal axes).

Installation:

The suspension system (to be ordered separately) has sheet-steel supporting plates with polycarbonate covering bases and steel suspension cables with a millimetric adjustment system (applied to the modules).

Dimension:

185 x 79 - length 486

Colour:

Grey (15)

Mounting:

Ceiling pendant

Wiring:

The fitting comes complete with electronic transformers. It is designed for through wiring by means of special terminal boards housed inside the aluminium profile. The system is able to switch on three groups of fittings separately.

Complies with EN605981 and pertinent regulations

