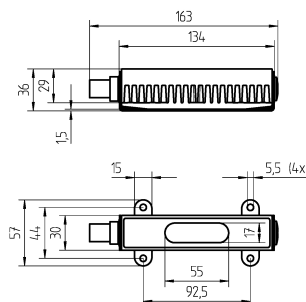
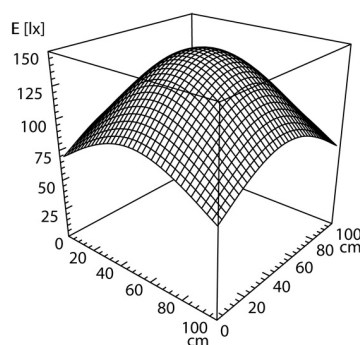
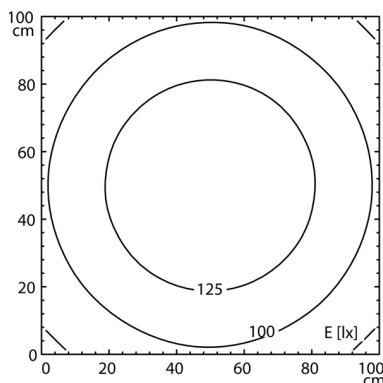
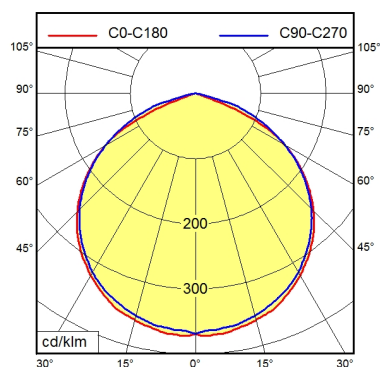


Surface-mounted luminaire ONE LED MVAL 1 S

112887037-00076065



QUICKON 3



Light source

Work equipment

Connected load

Power consumption

Luminous flux

Light type/-color

Colour temperatur

Color rendering index

Light distribution

Glare control

System of protection

Class of protection

Technology

Operation

Housing

Light source cover

Weight (net)

Mains lead

Design

Fastening

Maximum ambient temperature

Special features

LED

Without

20 - 28 V; DC

ca. 6 W

approx. 400 lm

Cold white

approx. 5.000 K

CRI ≥ 80

Direct; Symmetric

See luminaire type

IP 67

III

-

External

Aluminium; Untreated; Aluminium coloured
anodised
Borosilicate

ca. 0,2 kg

Built-in plug; QUICKON 3

mounted version

Screws

50 °C

Luminaire body rotatable ±90°