

THEMIS CARRÉ

27-Oct.-2016

0.8

LED 4/6W | 500-700mA | 6Vf | PCB 3-step | excl. power supply

CE IP20 960°C 0,3m

3000K | >80CRI | 280-340lm

white texture	303171W4
silver / grey	303171S4
black texture + gold	303171K4

OPTIONAL

plaster kit	90017110
recessed housing	90012031

1.7

LED 4/6W | 500-700mA | 6Vf | PCB 3-step | excl. power supply

CE IP20 960°C 0,3m

3000K | >80CRI | 280-340lm

white texture	303471W4
silver / grey	303471S4
black texture + gold	303471K4

OPTIONAL

plaster kit	90017113
recessed housing	90012034

2.7

LED 4/6W | 500-700mA | 6Vf | PCB 3-step | excl. power supply

CE IP20 960°C 0,3m

3000K | >80CRI | 280-340lm

white texture	303571W4
silver / grey	303571S4
black texture + gold	303571K4

OPTIONAL

plaster kit	90017114
recessed housing	90012035

plaster kit dimensions

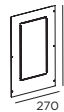
THEMIS CARRÉ 0.8



THEMIS CARRÉ 1.7

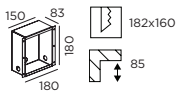


THEMIS CARRÉ 2.7

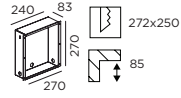


recessed housing dimensions - always use in combination with plaster kit

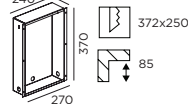
THEMIS CARRÉ 0.8



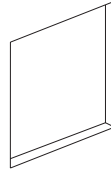
THEMIS CARRÉ 1.7



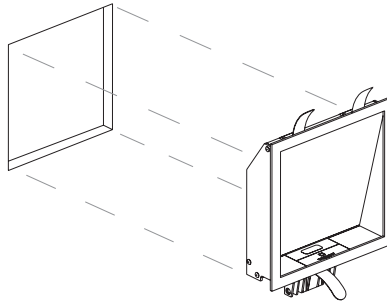
THEMIS CARRÉ 2.7



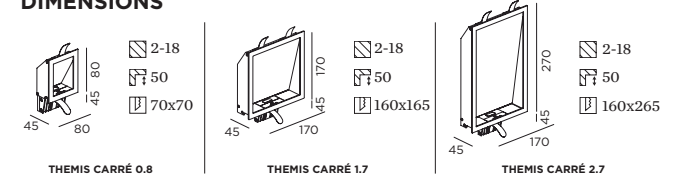
①



③



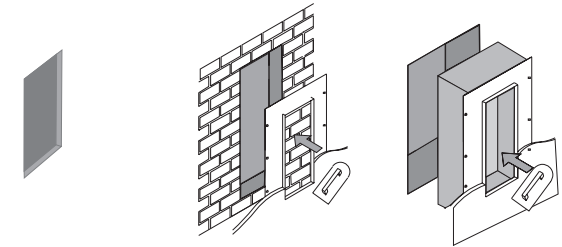
DIMENSIONS



MOUNTING INSTRUCTION

- ① Make a hole in the wall according to the prescribed dimensions.

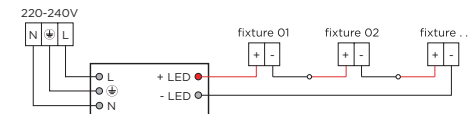
Optional: Plaster kit / Recessed housing



POWER CONNECTION

- ② SERIAL CONNECTION - for LED

Always use **POWER SUPPLY** according to the specifications of the LED-module



- ③ Insert the THEMIS fixture into the wall or plaster kit / recessed housing.

PB19-010-485-00



WEVER & DUCRÉ
LIGHTING

www.weverducre.com

Wever & Ducre bvba Kwadestraat 153 bus 2.1 8800 Roeselare

INSTALLATION
INSTRUCTIONS