

# SIRRO

26-11-2015

## 3.0 LED - ceiling surfaced

LED 3x10W | 220-240VAC | 50-60Hz | COB 3-step | incl. PS | phase-cut dim  
 CE IP20 960°C 0,3m P 36° 35°/35° 355°

white texture  
 white texture + black  
 aluminium brushed + black

139364W\_  
 139364E\_  
 139364F\_

### LIGHT COLOUR

2200K | >80CRI | 465lm 1  
 2700K | >90CRI | 590lm 3  
 3000K | >90CRI | 640lm 5

## 3.0 LED - suspended

LED 3x10W | 220-240VAC | 50-60Hz | COB 3-step | incl. PS | phase-cut dim  
 CE IP20 960°C 0,3m P 36° 35°/35° 355°

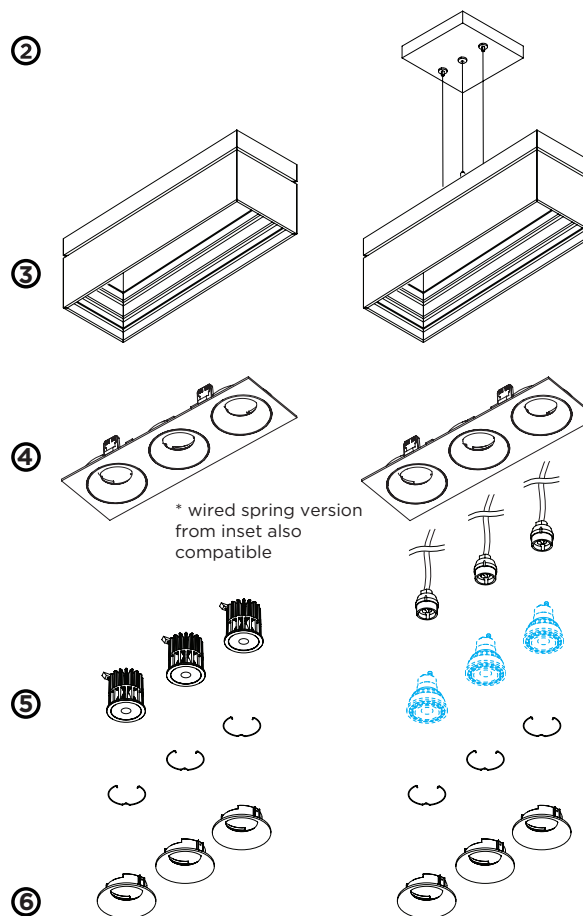
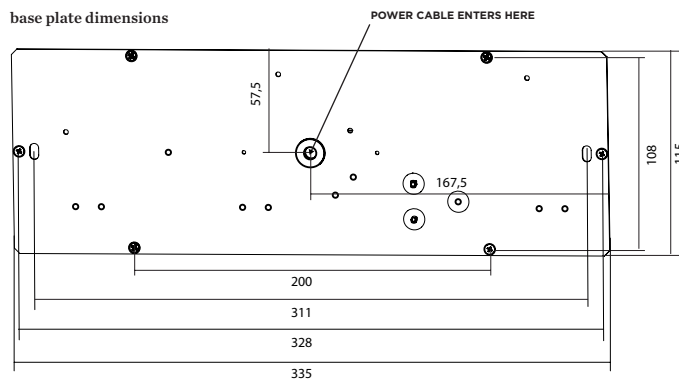
white texture  
 white texture + black  
 aluminium brushed + black

139764W\_  
 139764E\_  
 139764F\_

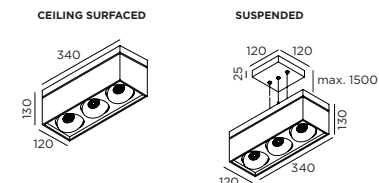
### LIGHT COLOUR

2200K | >80CRI | 465lm 1  
 2700K | >90CRI | 590lm 3  
 3000K | >90CRI | 640lm 5

base plate dimensions



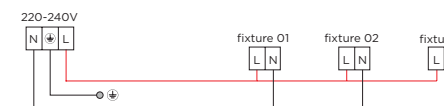
## DIMENSIONS



## MOUNTING INSTRUCTION

### POWER CONNECTION

#### ① PARALLEL CONNECTION - for LED and PAR16



- ② Mount the ceiling base on the ceiling
- ③ Attach the SIRRO to the ceiling base (in case of surfaced version)
- ④ Insert the outer part of the inset module into the SIRRO
- ⑤ Insert the lamps into the inner parts of the inset module
- ⑥ Click the inner part of the inset module into the outer part



WEVER & DUCRÉ  
 LIGHTING

www.weverducre.com

INSTALLATION  
 INSTRUCTIONS