

ROCK LIGHT COLLECTION

WALL SURFACE 5.0

24-May-2017

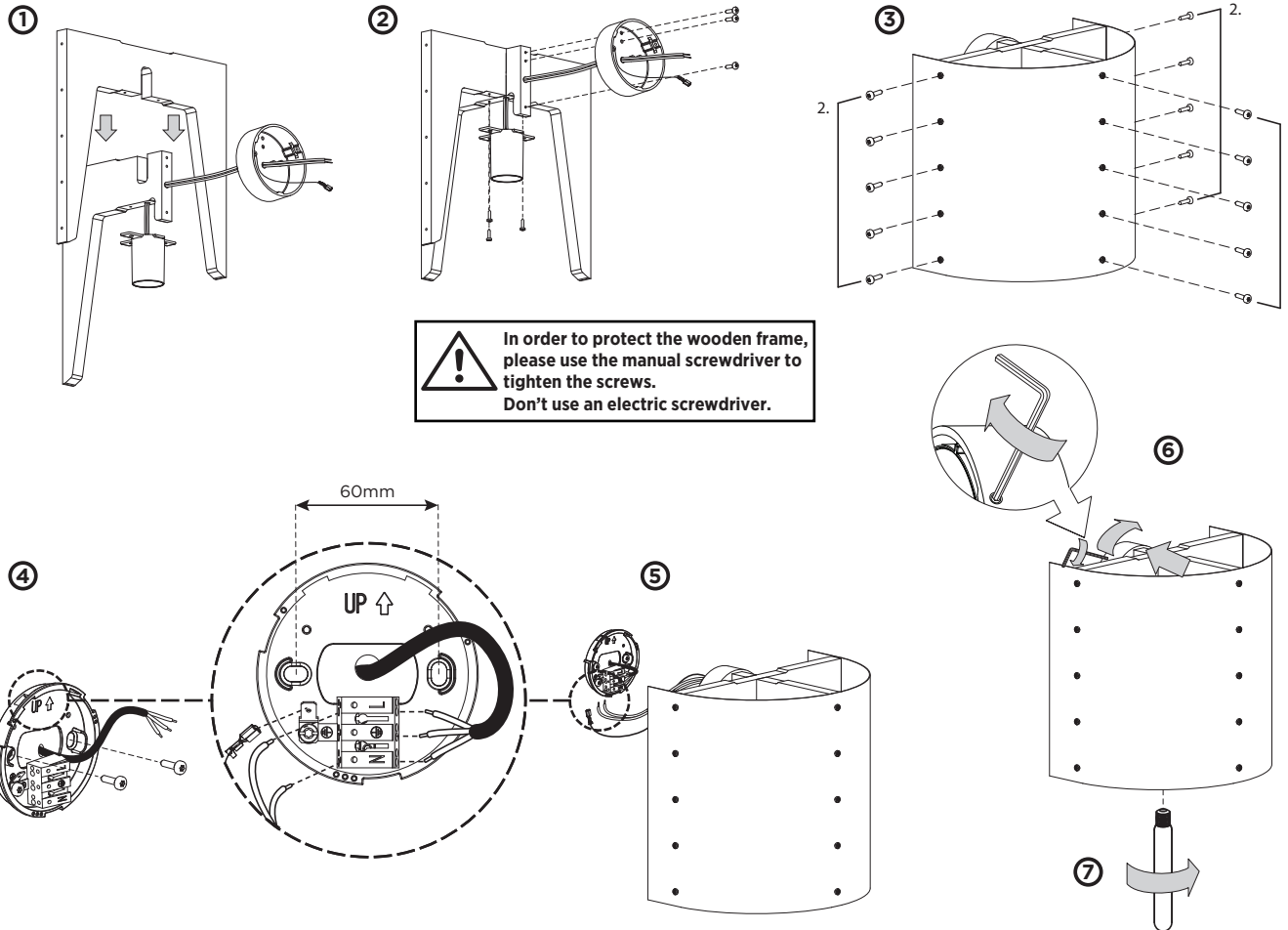
WALL SURFACE 5.0

E26-E27 max. 100W | 110-220VAC | 50-60Hz | stone veneer | MDF lacquered

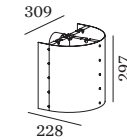
CE IP20 960°C 0,9m

Autumn white
Silver shine
Multicolour

2231E8W0
2231E8S0
2231E8D0



DIMENSIONS



WALL SURFACE 5.0

MOUNTING SITUATION

- ① Interlock the wooden parts
 - ② Screw down the lamp socket and the baldachin
 - ③ Screw down the stone veneers in the right order
 - ④ Mount the base plate to the wall using suitable dowels and connect it to the power supply. Pay attention to the upside mark.
-
- ⑤ Connect the grounding cable and the electric terminal
 - ⑥ Mount the baldachin to the baseplate with the bjo-net catch. Align the luminaire horizontally and fix it with the threaded pin
 - ⑦ Put the light bulb into the lamp socket



WEVER & DUCRÉ
LIGHTING

www.weverducre.com

INSTALLATION
INSTRUCTIONS