

LUNA SQUARE

09-Feb.-2017

1.0 LED HV

LED 7W | 220-240VAC | PCB 3-step | incl. PS | phase-cut dim

CE IP44 0.3m

3000K | >90CRI | 350lm

white texture
matte chrome
black texture

114488W5
114488M5
114488B5

OPTIONAL

for optional dimmers see our catalogue

1.0 LED

LED 7/10W | 350-500mA | 18Vf | COB 3-step | excl. power supply

CE IP44 0.3m

white texture
matte chrome
black texture

114481W_
114481M_
114481B_

LIGHT COLOUR

2700K | >90CRI | 360-510lm

3

3000K | >90CRI | 400-540lm

5

1800K-2850K | >95CRI | 270-370lm

9

ALWAYS USE

for power supplies see our catalogue

1.0 PAR16

PAR16 max. 10W | GU10 | 100-240VAC | 50-60Hz

CE IP44 0.9m

white texture
matte chrome
black texture

114220W0
114220M0
114220B0

OPTIONAL

for optional lamps see our catalogue

1.0 MR16

QR-CBC51 max. 10W | GU5.3 | 12V | excl. PS

CE IP44 0.9m

white texture
matte chrome
black texture

114210W0
114210M0
114210B0

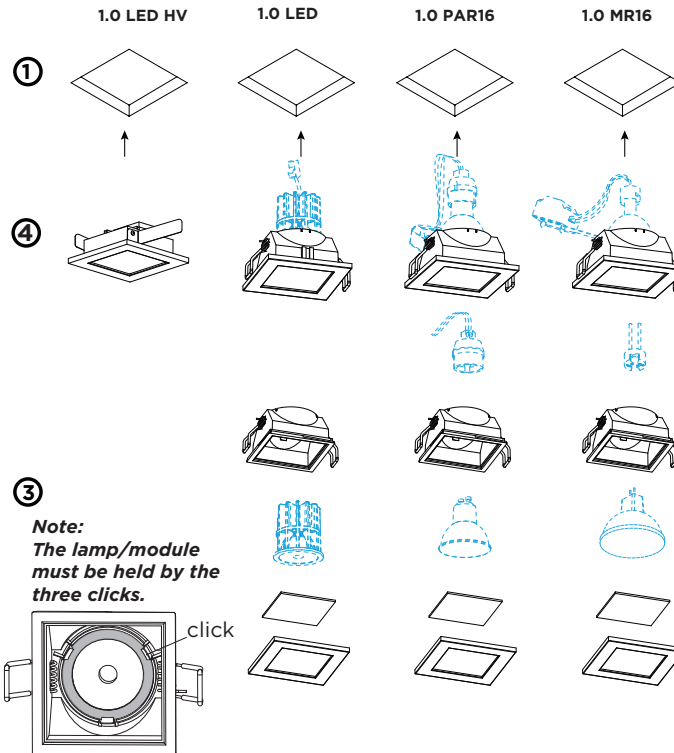
ALWAYS USE

for power supplies see our catalogue

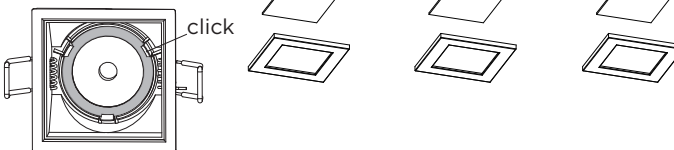
OPTIONAL

plaster kit
recessed housing

90017102
90012026



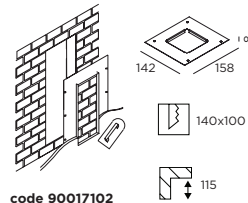
Note:
The lamp/module
must be held by the
three clicks.



General mounting notice for ceiling / wall with optional plaster kit or recessed

PLASTER KIT

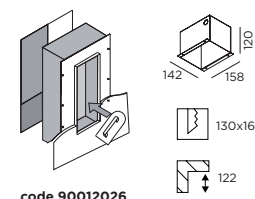
Use into brick walls
or plastered stalton



code 90017102

RECESSED HOUSING

Always use in combination
with plaster kit
Use in concrete structures



code 90012026

DIMENSIONS

1.0 LED HV		36		72x72		2-25		50
1.0 LED		94		76x76		2-25		100
1.0 PAR16		114		76x76		2-25		120
1.0 MR16		95		76x76		2-25		100

MOUNTING INSTRUCTION

① Make a hole in the ceiling according to the prescribed dimensions.

② POWER CONNECTION

Connect



③ Put the illuminant in the assembled cover.

Note: The lamp/module must be clicked into place.

④ Insert the fixture in the hole

OPTIONAL:

insert with Plaster Kit

or

insert with Plaster Kit and Recessed Housing



Caution, risk of
electric shock

The light source of the integrated LED is not replaceable;
When the light source reaches its end of life the whole
luminaire shall be replaced.



WEVER & DUCRÉ
LIGHTING

www.weverducre.com

Wever & Ducre bvba Kwadestraat 153 bus 2.1 8800 Roeselare

INSTALLATION
INSTRUCTIONS