

LOUIS

21-04-2015

1.0

LED 55W | 220-240VAC | 50-60Hz | PCB 3-step | dali switch dim

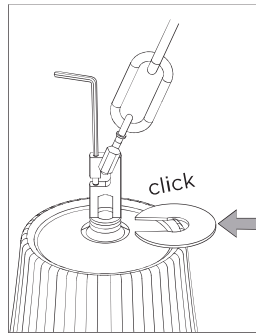
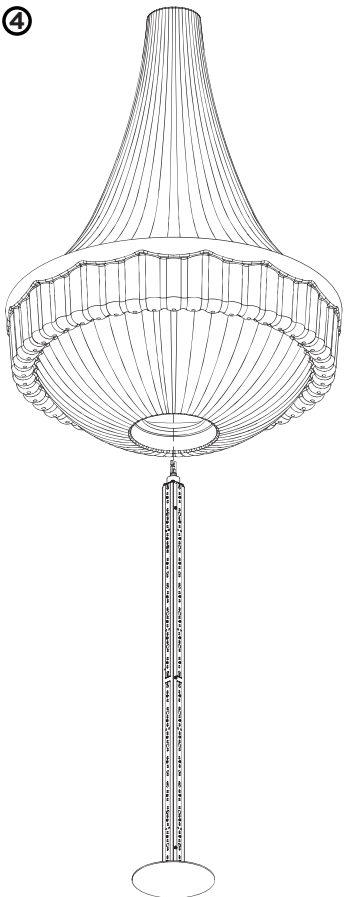
CE IP20 960° 0,5m

2700K | >85CRI | 3300lm

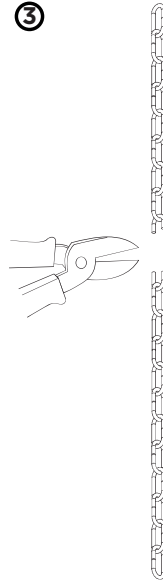
white texture

211185W2

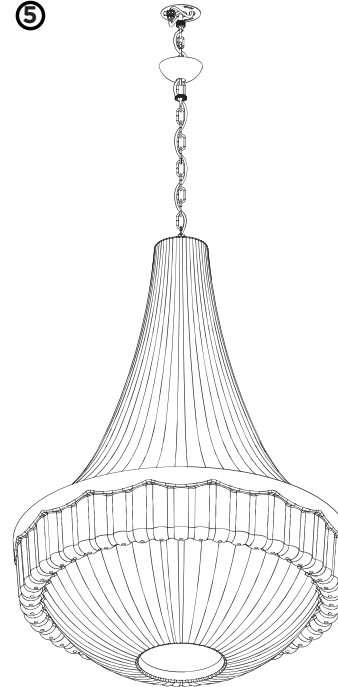
④



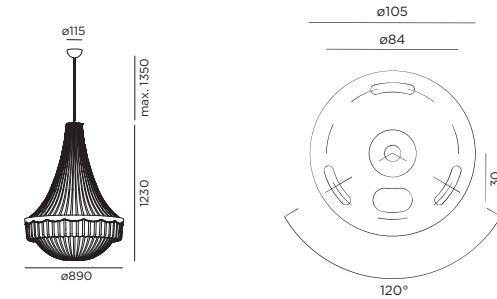
③



⑤



DIMENSIONS

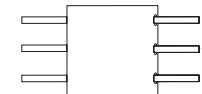


MOUNTING INSTRUCTION

- ① Fix the mounting plate on the ceiling

POWER CONNECTION

- ② Connect the wires
Interior: STANDARD connection



- ③ Cut off the chain if necessary
- ④ Put the light source in the diffuser and fix it with the retaining ring
- ⑤ Fix the baldachin housing on the mounting plate



WEVER & DUCRÉ
LIGHTING

www.weverducre.com

INSTALLATION
INSTRUCTIONS