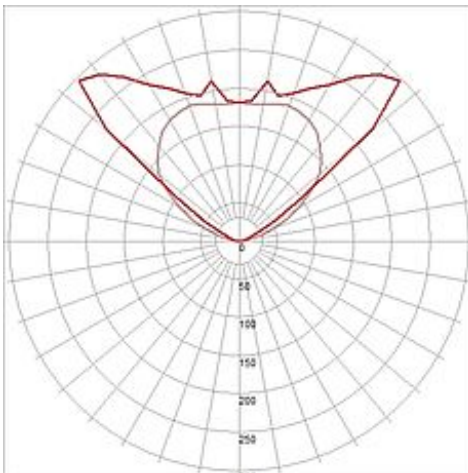
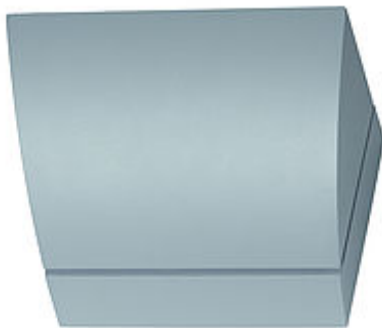
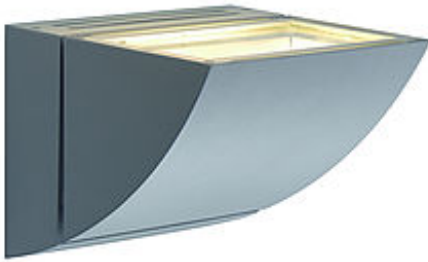
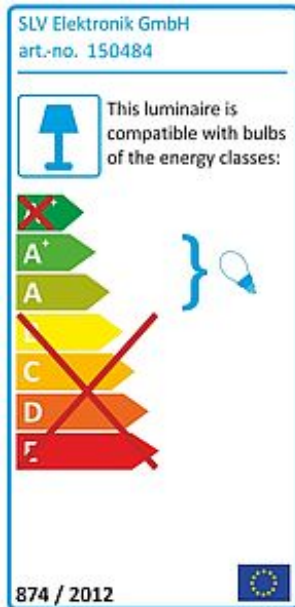


SHELL WL-2 Rx7s wall lamp

silvergrey, max. 70W



Article number	150484
Type of lamp	Conventional lamp
Lamp	HQI-TS / CDM-TD 70W
Lampholder / Socket	Rx7s
Number of light sources	1
Lamp included	No
Width	22 cm
Height	15 cm
Depth	16.5 cm
Net weight	1.711 kg
Gross weight	1.726 kg
Voltage	230 Volt
Max. wattage	70 Watt
Protection class	I
Material	aluminium
Colour	silvergrey
Way of mounting	surface wall mounting
Remark 1	Electronic ballast incorporated
Remark 2	Only operate as an uplight
Remark 3	Not dimmable
Remark 4	Energy labels in your language are available in the Service Area sub point Download
Energy class ballast	A2
Suitable for lamps from EEC	A
Suitable for lamps up to EEC	A+
Light distribution type 1	indirect
Light distribution type 3	axisymmetric



The SHELL WL-2 wall luminaire ensures flooding illumination. Designed for Rx7s metal halide lamps with 70W and the availability in white or silvergrey colour finish, this technical wall light is ready for direct connection to 230V mains supply, by means of the already incorporated electronic ballast. This luminaire is compatible with bulbs of the energy classes: A - A+