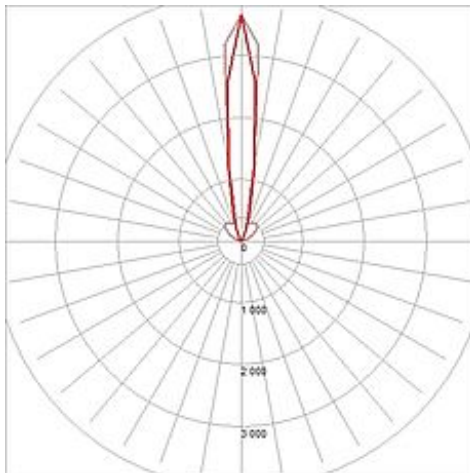
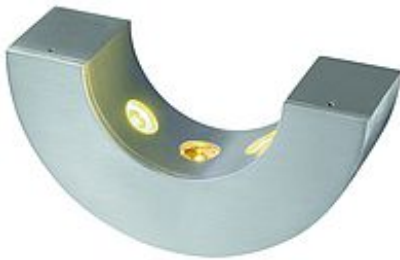
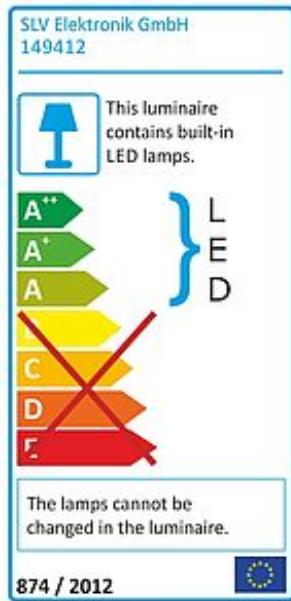


## HALF PIPE wall lamp

semicircular, alu-brushed, 3x 1W, 3000K



Article number	149412
Type of lamp	LED lamp
Lamp	Power LED 1W
Number of light sources	3
Lamp included	Yes
Width	17.6 cm
Height	9 cm
Depth	5.6 cm
Net weight	0.46 kg
Gross weight	1.32 kg
Voltage	230 Volt
Max. wattage	3 Watt
Protection class	I
Material	aluminium
Colour	aluminium brushed
Way of mounting	surface wall mounting
Remark 1	Energy labels in your language are available in the Service Area sub point Download
Average lifespan	30000 Hours
Colour temperature	3000 Kelvin
Colour rendering index	80
Luminous flux	80 lm
Suitable for lamps from EEC	A
Suitable for lamps up to EEC	A++
Light distribution type 1	direct
Light distribution type 2	indirect
Light distribution type 3	asymmetric



Our HALF PIPE wall luminaire is made from aluminum with a brushed finish. It is available with either blue, pure or warm white Power LED, creating a nice effect for indirect illumination. Thanks to the already incorporated LED converter, HALF PIPE is ready for direct connection to 230V mains supply. This luminaire contains built-in LED lamps. EEK: A - A++. The lamps cannot be changed in the luminaire.