

IN-FINITY 100 RECESSED TRIM 4000K MICRO-PRISMATIC DIFFUSER

Number of heads	1
Mounting	Recessed Trim
Lamps description	Top LED 34,1W/m 4228 lm/m 4000K CRI 80
Luminaire luminous flux	See reference number
Voltage (V)	220/240
Environment	Indoor
Notes	Micro-Prismatic Diffuser: Highly efficient multilayer diffuser that, thanks to its unique micro-prismatic texture, provides a glare free UGR<19 light beam. / Emergency: Emergency Module available in all versions, length 1125 mm. In normal use, it uses the same power consumption as the standard In-Finity. In emergency use, it emits 10% of normal use during 3 hours. Endcaps: must be ordered separately. Consult Flos Architectural team for a configuration without end caps.



In-Finity 100 Recessed Trim 4000K Micro-Prismatic Diffuser

designed by FLOS Architectural

OPTICAL

Aiming	Fixed
Light distribution symmetry	Symmetric
Beam angle	77°

LED modular system for recessed Trim installation, including LED luminaires, aluminum installation profile and diffusers. Drivers included in lighting modules for 220-240V connection to mains or to other lighting modules.

ELECTRICAL

Transformer availability	Included
Transformer mounting	Integral
Transformer type	Electronic
Emergency	Without
Insulation class	Class I

- NI0T054U30 565mm - 1580lm White
- NI0T054U02 565mm - 1580lm Anodized Grey
- NI0T054U14 565mm - 1580lm Black
- NI0T084U30 845mm - 2371lm White
- NI0T084U02 845mm - 2371lm Anodized Grey
- NI0T084U14 845mm - 2371lm Black
- NI0T114U30 1125mm - 3161lm White
- NI0T114U02 1125mm - 3161lm Anodized Grey
- NI0T114U14 1125mm - 3161lm Black
- NI0T144U30 1405mm - 3952lm White
- NI0T144U02 1405mm - 3952lm Anodized Grey
- NI0T144U14 1405mm - 3952lm Black
- NI0T164U30 1690mm - 4742lm White
- NI0T164U02 1690mm - 4742lm Anodized Grey
- NI0T164U14 1690mm - 4742lm Black
- NI0T194U30 1970mm - 5533lm White
- NI0T194U02 1970mm - 5533lm Anodized Grey
- NI0T194U14 1970mm - 5533lm Black
- NI0T254U30 2530mm - 7114lm White
- NI0T254U02 2530mm - 7114lm Anodized Grey
- NI0T254U14 2530mm - 7114lm Black
- NI0T304U30 3095mm - 8695lm White
- NI0T304U02 3095mm - 8695lm Anodized Grey
- NI0T304U14 3095mm - 8695lm Black
- NI0TFC4U30 Flat Corner - 3161lm White
- NI0TFC4U02 Flat Corner - 3161lm Anodized Grey
- NI0TFC4U14 Flat Corner - 3161lm Black
- NI0TDC4U30 Dihedral Corner - 3161lm White
- NI0TDC4U02 Dihedral Corner - 3161lm Anodized Grey
- NI0TDC4U14 Dihedral Corner - 3161lm Black
- NI0TEM4U30 Emergency - 3952lm White
- NI0TEM4U02 Emergency - 3952lm Anodized Grey
- NI0TEM4U14 Emergency - 3952lm Black

PHYSICAL

Recessed depth (mm)	135
Construction material	Aluminium



In-Finity 100 Recessed Trim 4000K Micro-Prismatic Diffuser . Accessories

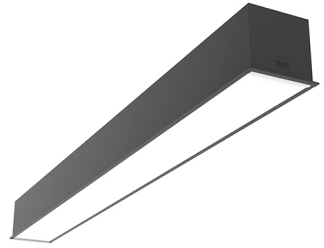
Structural



- 08.9055.40
- 08.9055.02
- 08.9055.NS

Metal cover. Recessed Trim. 100 mm

Metal cover for the different profiles. 2 unit kit.



In-Finity 100 Recessed Trim 4000K Micro-Prismatic Diffuser designed by FLOS Architectural

LED modular system for recessed Trim installation, including LED luminaires, aluminum installation profile and diffusers. Drivers included in lighting modules for 220-240V connection to mains or to other lighting modules.

In-Finity 100 Recessed Trim 4000K Micro-Prismatic Diffuser . Lamps



Top LED

Lamp category:

LED

Socket:

Special base

Lamp type:

Top LED

- NI0T054U30 565mm - 1580lm White
- NI0T054U02 565mm - 1580lm Anodized Grey
- NI0T054U14 565mm - 1580lm Black
- NI0T084U30 845mm - 2371lm White
- NI0T084U02 845mm - 2371lm Anodized Grey
- NI0T084U14 845mm - 2371lm Black
- NI0T114U30 1125mm - 3161lm White
- NI0T114U02 1125mm - 3161lm Anodized Grey
- NI0T114U14 1125mm - 3161lm Black
- NI0T144U30 1405mm - 3952lm White
- NI0T144U02 1405mm - 3952lm Anodized Grey
- NI0T144U14 1405mm - 3952lm Black
- NI0T164U30 1690mm - 4742lm White
- NI0T164U02 1690mm - 4742lm Anodized Grey
- NI0T164U14 1690mm - 4742lm Black
- NI0T194U30 1970mm - 5533lm White
- NI0T194U02 1970mm - 5533lm Anodized Grey
- NI0T194U14 1970mm - 5533lm Black
- NI0T254U30 2530mm - 7114lm White
- NI0T254U02 2530mm - 7114lm Anodized Grey
- NI0T254U14 2530mm - 7114lm Black
- NI0T304U30 3095mm - 8695lm White
- NI0T304U02 3095mm - 8695lm Anodized Grey
- NI0T304U14 3095mm - 8695lm Black
- NI0TFC4U30 Flat Corner - 3161lm White
- NI0TFC4U02 Flat Corner - 3161lm Anodized Grey
- NI0TFC4U14 Flat Corner - 3161lm Black
- NI0TDC4U30 Dihedral Corner - 3161lm White
- NI0TDC4U02 Dihedral Corner - 3161lm Anodized Grey
- NI0TDC4U14 Dihedral Corner - 3161lm Black
- NI0TEM4U30 Emergency - 3952lm White
- NI0TEM4U02 Emergency - 3952lm Anodized Grey
- NI0TEM4U14 Emergency - 3952lm Black