

## IN-FINITY 100 RECESSED TRIM 3000K MICRO-PRISMATIC DIFFUSER

<b>Number of heads</b>	1
<b>Mounting</b>	Recessed Trim
<b>Lamps description</b>	Top LED 34,1W/m 3915 lm/m 3000K CRI 80
<b>Luminaire luminous flux</b>	See reference number
<b>Voltage (V)</b>	220/240
<b>Environment</b>	Indoor
<b>Notes</b>	Micro-Prismatic Diffuser: Highly efficient multilayer diffuser that, thanks to its unique micro-prismatic texture, provides a glare free UGR<19 light beam. / Emergency: Emergency Module available in all versions, length 1125 mm. In normal use, it uses the same power consumption as the standard In-Finity. In emergency use, it emits 10% of normal use during 3 hours. Endcaps: must be ordered separately. Consult Flos Architectural team for a configuration without end caps.



### In-Finity 100 Recessed Trim 3000K Micro-Prismatic Diffuser

designed by FLOS Architectural

### OPTICAL

<b>Aiming</b>	Fixed
<b>Light distribution symmetry</b>	Symmetric
<b>Beam angle</b>	77°

LED modular system for recessed Trim installation, including LED luminaires, aluminum installation profile and diffusers. Drivers included in lighting modules for 220-240V connection to mains or to other lighting modules.

### ELECTRICAL

<b>Transformer availability</b>	Included
<b>Transformer mounting</b>	Integral
<b>Transformer type</b>	Electronic
<b>Emergency</b>	Without
<b>Insulation class</b>	Class I

- NI0T053U30 565mm - 1607lm White
- NI0T053U02 565mm - 1607lm Anodized Grey
- NI0T053U14 565mm - 1607lm Black
- NI0T083U30 845mm - 2410lm White
- NI0T083U02 845mm - 2410lm Anodized Grey
- NI0T083U14 845mm - 2410lm Black
- NI0T113U30 1125mm - 3214lm White
- NI0T113U02 1125mm - 3214lm Anodized Grey
- NI0T113U14 1125mm - 3214lm Black
- NI0T143U30 1405mm - 4017lm White
- NI0T143U02 1405mm - 4017lm Anodized Grey
- NI0T143U14 1405mm - 4017lm Black
- NI0T163U30 1690mm - 4821lm White
- NI0T163U02 1690mm - 4821lm Anodized Grey
- NI0T163U14 1690mm - 4821lm Black
- NI0T193U30 1970mm - 5624lm White
- NI0T193U02 1970mm - 5624lm Anodized Grey
- NI0T193U14 1970mm - 5624lm Black
- NI0T253U30 2530mm - 7231lm White
- NI0T253U02 2530mm - 7231lm Anodized Grey
- NI0T253U14 2530mm - 7231lm Black
- NI0T303U30 3095mm - 8838lm White
- NI0T303U02 3095mm - 8838lm Anodized Grey
- NI0T303U14 3095mm - 8838lm Black
- NI0TFC3U30 Flat Corner - 3214lm White
- NI0TFC3U02 Flat Corner - 3214lm Anodized Grey
- NI0TFC3U14 Flat Corner - 3214lm Black
- NI0TDC3U30 Dihedral Corner - 3214lm White
- NI0TDC3U02 Dihedral Corner - 3214lm Anodized Grey
- NI0TDC3U14 Dihedral Corner - 3214lm Black
- NI0TEM3U30 Emergency - 4017lm White
- NI0TEM3U02 Emergency - 4017lm Anodized Grey
- NI0TEM3U14 Emergency - 4017lm Black

### PHYSICAL

<b>Recessed depth (mm)</b>	135
<b>Construction material</b>	Aluminium



## In-Finity 100 Recessed Trim 3000K Micro-Prismatic Diffuser . Accessories

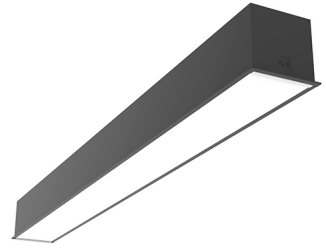
### Structural



- 08.9055.40
- 08.9055.02
- 08.9055.NS

#### Metal cover. Recessed Trim. 100 mm

Metal cover for the different profiles. 2 unit kit.



### In-Finity 100 Recessed Trim 3000K Micro-Prismatic Diffuser designed by FLOS Architectural

LED modular system for recessed Trim installation, including LED luminaires, aluminum installation profile and diffusers. Drivers included in lighting modules for 220-240V connection to mains or to other lighting modules.

## In-Finity 100 Recessed Trim 3000K Micro-Prismatic Diffuser . Lamps



#### Top LED

#### Lamp category:

LED

#### Socket:

Special base

#### Lamp type:

Top LED

- NI0T053U30 565mm - 1607lm White
- NI0T053U02 565mm - 1607lm Anodized Grey
- NI0T053U14 565mm - 1607lm Black
- NI0T083U30 845mm - 2410lm White
- NI0T083U02 845mm - 2410lm Anodized Grey
- NI0T083U14 845mm - 2410lm Black
- NI0T113U30 1125mm - 3214lm White
- NI0T113U02 1125mm - 3214lm Anodized Grey
- NI0T113U14 1125mm - 3214lm Black
- NI0T143U30 1405mm - 4017lm White
- NI0T143U02 1405mm - 4017lm Anodized Grey
- NI0T143U14 1405mm - 4017lm Black
- NI0T163U30 1690mm - 4821lm White
- NI0T163U02 1690mm - 4821lm Anodized Grey
- NI0T163U14 1690mm - 4821lm Black
- NI0T193U30 1970mm - 5624lm White
- NI0T193U02 1970mm - 5624lm Anodized Grey
- NI0T193U14 1970mm - 5624lm Black
- NI0T253U30 2530mm - 7231lm White
- NI0T253U02 2530mm - 7231lm Anodized Grey
- NI0T253U14 2530mm - 7231lm Black
- NI0T303U30 3095mm - 8838lm White
- NI0T303U02 3095mm - 8838lm Anodized Grey
- NI0T303U14 3095mm - 8838lm Black
- NI0TFC3U30 Flat Corner - 3214lm White
- NI0TFC3U02 Flat Corner - 3214lm Anodized Grey
- NI0TFC3U14 Flat Corner - 3214lm Black
- NI0TDC3U30 Dihedral Corner - 3214lm White
- NI0TDC3U02 Dihedral Corner - 3214lm Anodized Grey
- NI0TDC3U14 Dihedral Corner - 3214lm Black
- NI0TEM3U30 Emergency - 4017lm White
- NI0TEM3U02 Emergency - 4017lm Anodized Grey
- NI0TEM3U14 Emergency - 4017lm Black