

## IN-FINITY 100 RECESSED TRIM 3000K GENERAL LIGHTING DALI

<b>Number of heads</b>	1
<b>Mounting</b>	Recessed Trim
<b>Lamps description</b>	Top LED 34,1W/m 3915 lm/m 3000K CRI 80
<b>Luminaire luminous flux</b>	See reference number
<b>Voltage (V)</b>	220/240
<b>Environment</b>	Indoor
<b>Notes</b>	Opal Diffuser: Diffuse, glare free and uniform lighting throughout the room. / Emergency: Emergency Module available in all versions, length 1125 mm. In normal use, it uses the same power consumption as the standard In-Finity. In emergency use, it emits 10% of normal use during 3 hours. Endcaps: must be ordered separately. Consult Flos Architectural team for a configuration without end caps.



**In-Finity 100 Recessed Trim 3000K General Lighting Dali**  
designed by FLOS Architectural

### OPTICAL

<b>Aiming</b>	Fixed
<b>Light distribution symmetry</b>	Symmetric
<b>Beam angle</b>	109°

LED modular system for recessed Trim installation, including LED luminaires, aluminum installation profile and diffusers. Drivers included in lighting modules for 220-240V connection to mains or to other lighting modules.

### ELECTRICAL

<b>Transformer availability</b>	Included
<b>Transformer mounting</b>	Integral
<b>Transformer type</b>	Electronic dimmable dali
<b>Emergency</b>	Without
<b>Insulation class</b>	Class I

- N10T053G30.DA 565mm - 1578lm White
- N10T053G02.DA 565mm - 1578lm Anodized Grey
- N10T053G14.DA 565mm - 1578lm Black
- N10T083G30.DA 845mm - 2367lm White
- N10T083G02.DA 845mm - 2367lm Anodized Grey
- N10T083G14.DA 845mm - 2367lm Black
- N10T113G30.DA 1125mm - 3156lm White
- N10T113G02.DA 1125mm - 3156lm Anodized Grey
- N10T113G14.DA 1125mm - 3156lm Black
- N10T143G30.DA 1405mm - 3945lm White
- N10T143G02.DA 1405mm - 3945lm Anodized Grey
- N10T143G14.DA 1405mm - 3945lm Black
- N10T163G30.DA 1690mm - 4734lm White
- N10T163G02.DA 1690mm - 4734lm Anodized Grey
- N10T163G14.DA 1690mm - 4734lm Black
- N10T193G30.DA 1970mm - 5523lm White
- N10T193G02.DA 1970mm - 5523lm Anodized Grey
- N10T193G14.DA 1970mm - 5523lm Black
- N10T253G30.DA 2530mm - 7101lm White
- N10T253G02.DA 2530mm - 7101lm Anodized Grey
- N10T253G14.DA 2530mm - 7101lm Black
- N10T303G30.DA 3095mm - 8679lm White
- N10T303G02.DA 3095mm - 8679lm Anodized Grey
- N10T303G14.DA 3095mm - 8679lm Black
- N10TFC3G30.DA Flat Corner - 3156lm White
- N10TFC3G02.DA Flat Corner - 3156lm Anodized Grey
- N10TFC3G14.DA Flat Corner - 3156lm Black
- N10TDC3G30.DA Dihedral Corner - 3156lm White
- N10TDC3G02.DA Dihedral Corner - 3156lm Anodized Grey
- N10TDC3G14.DA Dihedral Corner - 3156lm Black
- N10TEM3G30.DA Emergency - 3945lm White
- N10TEM3G02.DA Emergency - 3945lm Anodized Grey
- N10TEM3G14.DA Emergency - 3945lm Black

### PHYSICAL

<b>Recessed depth (mm)</b>	135
<b>Construction material</b>	Aluminium



## In-Finity 100 Recessed Trim 3000K General Lighting Dali . Accessories

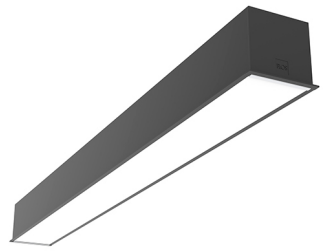
### Structural



- 08.9055.40
- 08.9055.02
- 08.9055.NS

#### Metal cover. Recessed Trim. 100 mm

Metal cover for the different profiles. 2 unit kit.



### In-Finity 100 Recessed Trim 3000K General Lighting Dali designed by FLOS Architectural

LED modular system for recessed Trim installation, including LED luminaires, aluminum installation profile and diffusers. Drivers included in lighting modules for 220-240V connection to mains or to other lighting modules.

## In-Finity 100 Recessed Trim 3000K General Lighting Dali . Lamps



#### Top LED

#### Lamp category:

LED

#### Socket:

Special base

#### Lamp type:

Top LED

- N10T053G30.DA 565mm - 1578lm White
- N10T053G02.DA 565mm - 1578lm Anodized Grey
- N10T053G14.DA 565mm - 1578lm Black
- N10T083G30.DA 845mm - 2367lm White
- N10T083G02.DA 845mm - 2367lm Anodized Grey
- N10T083G14.DA 845mm - 2367lm Black
- N10T113G30.DA 1125mm - 3156lm White
- N10T113G02.DA 1125mm - 3156lm Anodized Grey
- N10T113G14.DA 1125mm - 3156lm Black
- N10T143G30.DA 1405mm - 3945lm White
- N10T143G02.DA 1405mm - 3945lm Anodized Grey
- N10T143G14.DA 1405mm - 3945lm Black
- N10T163G30.DA 1690mm - 4734lm White
- N10T163G02.DA 1690mm - 4734lm Anodized Grey
- N10T163G14.DA 1690mm - 4734lm Black
- N10T193G30.DA 1970mm - 5523lm White
- N10T193G02.DA 1970mm - 5523lm Anodized Grey
- N10T193G14.DA 1970mm - 5523lm Black
- N10T253G30.DA 2530mm - 7101lm White
- N10T253G02.DA 2530mm - 7101lm Anodized Grey
- N10T253G14.DA 2530mm - 7101lm Black
- N10T303G30.DA 3095mm - 8679lm White
- N10T303G02.DA 3095mm - 8679lm Anodized Grey
- N10T303G14.DA 3095mm - 8679lm Black
- N10TFC3G30.DA Flat Corner - 3156lm White
- N10TFC3G02.DA Flat Corner - 3156lm Anodized Grey
- N10TFC3G14.DA Flat Corner - 3156lm Black
- N10TDC3G30.DA Dihedral Corner - 3156lm White
- N10TDC3G02.DA Dihedral Corner - 3156lm Anodized Grey
- N10TDC3G14.DA Dihedral Corner - 3156lm Black
- N10TEM3G30.DA Emergency - 3945lm White
- N10TEM3G02.DA Emergency - 3945lm Anodized Grey
- N10TEM3G14.DA Emergency - 3945lm Black