

LIGHT BELL DIMMABLE PUSH

Number of heads	1
Mounting	Pendant
Lamps description	LED Array 49,5W 6000 lm 3000K CRI 90
Luminaire luminous flux	Extreme Cut-off. See reference number
Voltage (V)	220/240
Environment	Indoor
Notes	Pin-block type dissipater.



OPTICAL

Aiming	Fixed
Light distribution symmetry	Symmetric
Beam angle	37°, 46°, 78°

ELECTRICAL

Transformer availability	Included
Transformer mounting	Integral
Transformer type	Electronic dimmable Push
Emergency	Without
Insulation class	Class I

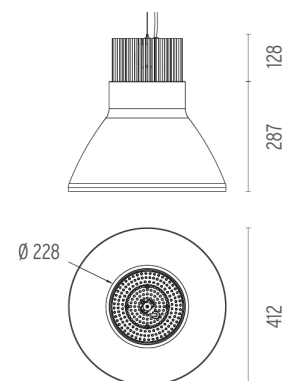
PHYSICAL

Construction material	Aluminium
Weight (kg)	Light Source: 3,81 / Reflectors: Aluminium 0,95 - Transparent 3,41 - Concrete 4

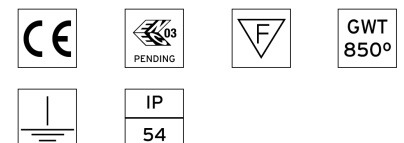
Light Bell Dimmable Push designed by Piero Lissoni

Suspended luminaire for mounting on the ceiling with LED light source. (4 metres maximum distance to ceiling). Power supply source integrated into luminaire housing. Reflector not included; supplied separately.

- 07.9642.14ADP.Light Source Black
- 07.9630.AP.Reflector - (37°) 3139lm Polished aluminium / Anodized aluminium
- 07.9630.70.Reflector - (37°) 3139lm Matt White / Anodized aluminium
- 07.9630.AN.Reflector - (78°) 2733lm Anodized black / Gold
- 07.9630.MM.Reflector - (78°) 2733lm Dark brown / Gold
- 07.9630.7C.Reflector - (78°) 3233lm Matt Black / Galvanic Copper
- 07.9630.76.Reflector - (46°) 3518lm Transparent
- 07.9630.CE.Reflector Concrete



CERTIFICATIONS



Light Bell Dimmable Push . Accessories

Electrical



● F0556020

Power Supply Rose. Non Dimmable

Rosette for indoors. IP20.



● F0557020

Power supply rose. Dimmable Push/Dali

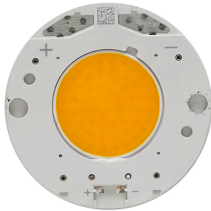
Rosette for indoors. IP20.



● 08.8775.40

Rosette IP54

Light Bell Dimmable Push . Lamps



LED Array

Lamp category:

LED

Socket:

Special base

Lamp type:

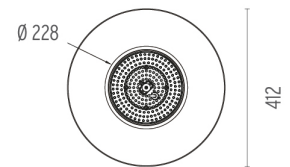
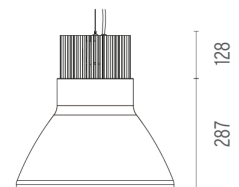
LED Array



Light Bell Dimmable Push
designed by Piero Lissoni

Suspended luminaire for mounting on the ceiling with LED light source. (4 metres maximum distance to ceiling). Power supply source integrated into luminaire housing. Reflector not included; supplied separately.

- 07.9642.14ADP.Light Source Black
- 07.9630.AP.Reflector - (37°) 3139lm Polished aluminium / Anodized aluminium
- 07.9630.70.Reflector - (37°) 3139lm Matt White / Anodized aluminium
- 07.9630.AN.Reflector - (78°) 2733lm Anodized black / Gold
- 07.9630.MM.Reflector - (78°) 2733lm Dark brown / Gold
- 07.9630.7C.Reflector - (78°) 3233lm Matt Black / Galvanic Copper
- 07.9630.76.Reflector - (46°) 3518lm Transparent
- 07.9630.CE.Reflector Concrete



CERTIFICATIONS

