

NEUTRON I FIXED ROUND CEILING

Number of heads	1
Mounting	Ceiling recessed
Lamps description	Phosphor LED 8,2W 965 lm 3000K CRI 80
Luminaire luminous flux	See reference number
Voltage (V)	220/240
Environment	Indoor, Outdoor

OPTICAL

Aiming	Fixed
Light distribution symmetry	Symmetric
Beam angle	39°

ELECTRICAL

Transformer availability	Included
Transformer mounting	Remote
Transformer type	Electronic
Emergency	Without
Insulation class	Class II

PHYSICAL

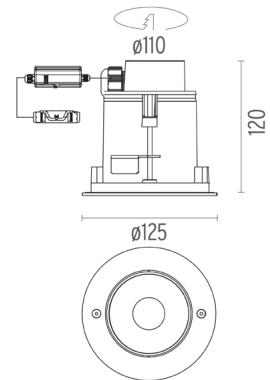
Cutout diameter (mm)	110
Diameter (mm)	125
Recessed depth (mm)	120
Construction material	Stainless steel
Weight (kg)	1,20



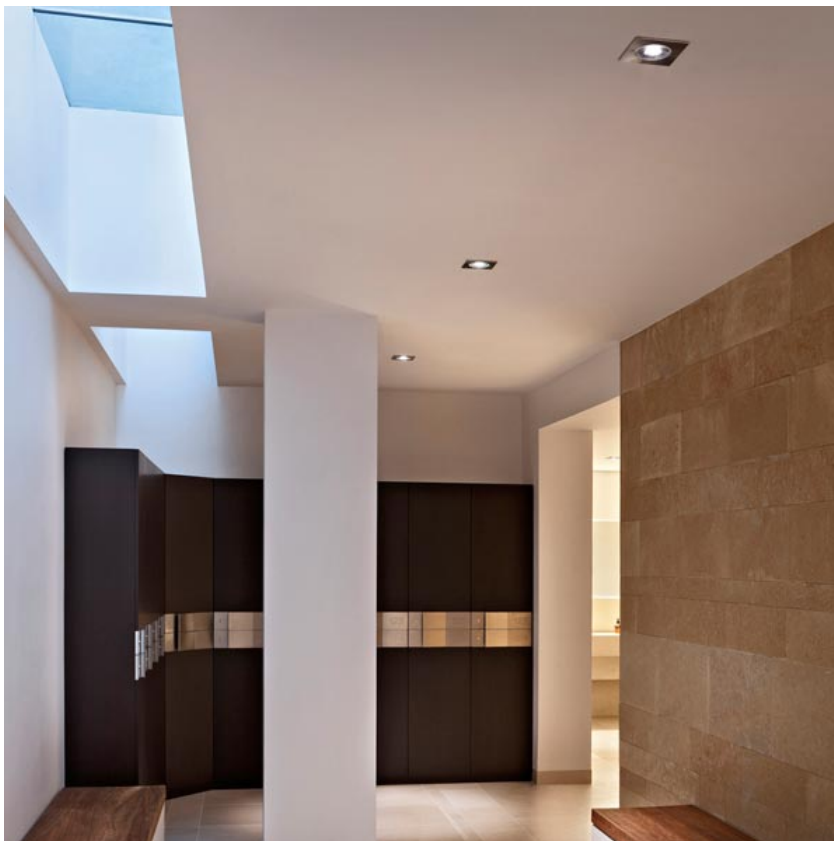
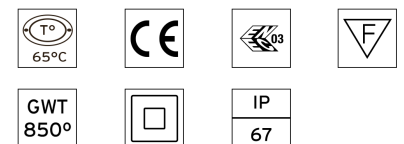
Neutron I Fixed Round Ceiling
designed by Piero Lissoni

LED downlight. Phosphor LED module integrated. Remote electronic driver 220/240V included. Watertight connection device included.

● 07.9502.04B - 576lm	Black
● 07.9502.72B - 576lm	Grey
● 07.9502.55B - 576lm	Stainless steel
● 07.9502.PNB - 576lm	Stainless steel black
● 07.9502.PBB - 576lm	Stainless steel bruno
● 07.9502.PGB - 576lm	Stainless steel gold



CERTIFICATIONS



Neutron I Fixed Round Ceiling . Accessories

Electrical



● 08.8012.00

Junction box

IP67 waterproof junction box: to be used for electrical connections.



Neutron I Fixed Round Ceiling designed by Piero Lissoni

LED downlight. Phosphor LED module integrated. Remote electronic driver 220/240V included. Watertight connection device included.

- 07.9502.04B - 576lm Black
- 07.9502.72B - 576lm Grey
- 07.9502.55B - 576lm Stainless steel
- 07.9502.PNB - 576lm Stainless steel black
- 07.9502.PBB - 576lm Stainless steel bruno
- 07.9502.PGB - 576lm Stainless steel gold

Neutron I Fixed Round Ceiling . Lamps



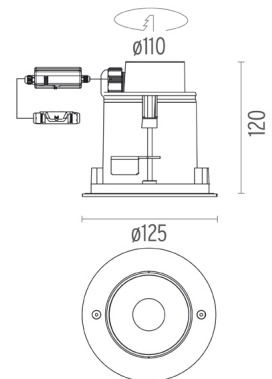
Phosphor LED

Lamp category:

LED

Lamp type:

Phosphor LED



CERTIFICATIONS

