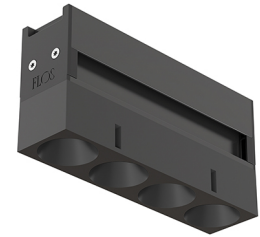


LIGHT SHADOW OPTIC FLOOD ON BOARD DIMMER

Number of heads	1
Mounting	Track mounting
Lamps description	Power LED 10,8W 4 x 280 lm 3000K CRI 90
Luminaire luminous flux	Extreme Cut-off. See reference number
Voltage (V)	24
Environment	Indoor
Notes	Installation frame not required.



OPTICAL

Aiming	Fixed
Light distribution symmetry	Symmetric
Beam angle	33° Flood

Light Shadow Optic Flood On Board Dimmer

designed by FLOS Architectural

Recessed integrated luminaire with 4 LED lighting spots. Remote power supply included.

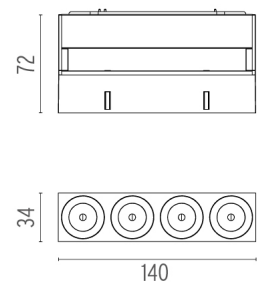
ELECTRICAL

Transformer availability	Separate item
Transformer mounting	Remote
Transformer type	Electronic dimmable
Emergency	Without
Insulation class	Class III

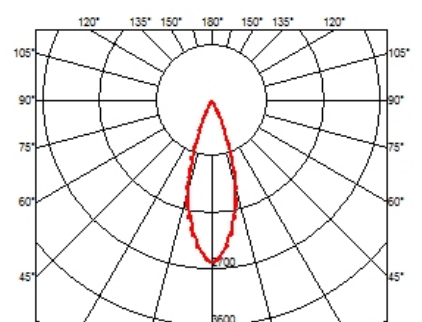
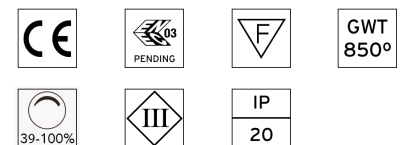
● 03.9636.40 - 817lm	White / Black
● 03.9636.14 - 817lm	Black / Black
○ 03.9635.40 - 841lm	White / White
● 03.9635.14 - 841lm	Black / White
● 03.9637.40 - 860lm	White / Chrome
● 03.9637.14 - 860lm	Black / Chrome
● 03.9638.40 - 833lm	White / Matt Gold
● 03.9638.14 - 833lm	Black / Matt Gold

PHYSICAL

Weight (kg)	0,34
--------------------	------



CERTIFICATIONS



Light Shadow Optic Flood On Board Dimmer . Lamps

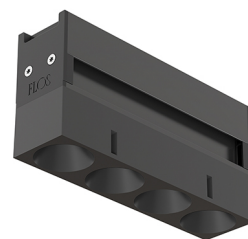


Power LED

Lamp category:
LED

Socket:
Special base

Lamp type:
Power LED

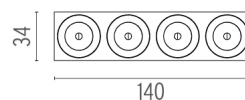


Light Shadow Optic Flood On Board Dimmer

designed by FLOS Architectural

Recessed integrated luminaire with 4 LED lighting spots. Remote power supply included.

- | | | |
|--|--------------------|-------------------|
| | 03.9636.40 - 817lm | White / Black |
| | 03.9636.14 - 817lm | Black / Black |
| | 03.9635.40 - 841lm | White / White |
| | 03.9635.14 - 841lm | Black / White |
| | 03.9637.40 - 860lm | White / Chrome |
| | 03.9637.14 - 860lm | Black / Chrome |
| | 03.9638.40 - 833lm | White / Matt Gold |
| | 03.9638.14 - 833lm | Black / Matt Gold |



CERTIFICATIONS

