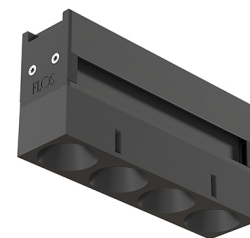


LIGHT SHADOW OPTIC FLOOD ON BOARD DIMMER

Number of heads	1
Mounting	Track mounting
Lamps description	Power LED 10,8W 4 x 260 lm 2700K CRI 90
Luminaire luminous flux	Extreme Cut-off. See reference number
Voltage (V)	24
Environment	Indoor
Notes	Installation frame not required.



OPTICAL

Aiming	Fixed
Light distribution symmetry	Symmetric
Beam angle	33° Flood

Light Shadow Optic Flood On Board Dimmer

designed by FLOS Architectural

Recessed integrated luminaire with 4 LED lighting spots. Remote power supply included.

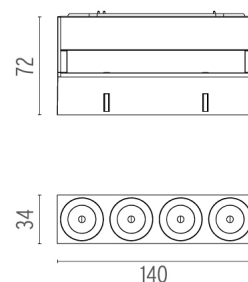
ELECTRICAL

Transformer availability	Separate item
Transformer mounting	Remote
Transformer type	Electronic dimmable
Emergency	Without
Insulation class	Class III

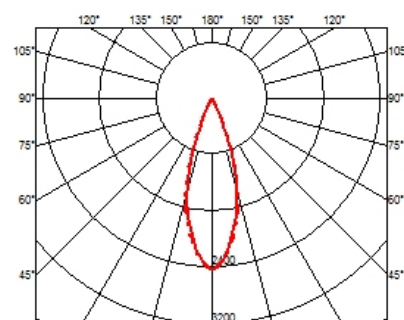
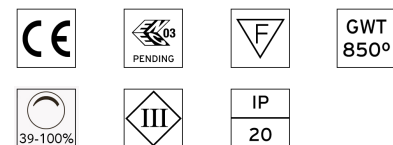
● 03.9626.40 - 765lm	White / Black
● 03.9626.14 - 765lm	Black / Black
○ 03.9625.40 - 788lm	White / White
● 03.9625.14 - 788lm	Black / White
● 03.9627.40 - 806lm	White / Chrome
● 03.9627.14 - 806lm	Black / Chrome
● 03.9628.40 - 781lm	White / Matt Gold
● 03.9628.14 - 781lm	Black / Matt Gold

PHYSICAL

Weight (kg)	0,34
--------------------	------



CERTIFICATIONS



Light Shadow Optic Flood On Board Dimmer . Lamps

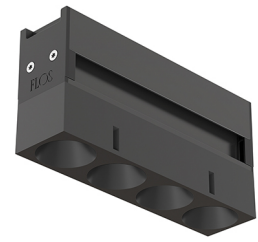


Power LED

Lamp category:
LED

Socket:
Special base

Lamp type:
Power LED

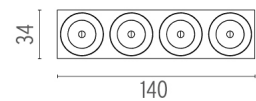
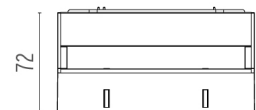


Light Shadow Optic Flood On Board Dimmer

designed by FLOS Architectural

Recessed integrated luminaire with 4 LED lighting spots. Remote power supply included.

	03.9626.40 - 765lm	White / Black
	03.9626.14 - 765lm	Black / Black
	03.9625.40 - 788lm	White / White
	03.9625.14 - 788lm	Black / White
	03.9627.40 - 806lm	White / Chrome
	03.9627.14 - 806lm	Black / Chrome
	03.9628.40 - 781lm	White / Matt Gold
	03.9628.14 - 781lm	Black / Matt Gold



CERTIFICATIONS

