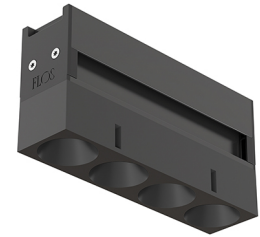


## LIGHT SHADOW OPTIC MEDIUM ON BOARD DIMMER

<b>Number of heads</b>	1
<b>Mounting</b>	Track mounting
<b>Lamps description</b>	Power LED 10,8W 4 x 260 lm 2700K CRI 90
<b>Luminaire luminous flux</b>	Extreme Cut-off. See reference number
<b>Voltage (V)</b>	24
<b>Environment</b>	Indoor
<b>Notes</b>	Installation frame not required.



### OPTICAL

<b>Aiming</b>	Fixed
<b>Light distribution symmetry</b>	Symmetric
<b>Beam angle</b>	23° Medium

### Light Shadow Optic Medium On Board Dimmer

designed by FLOS Architectural

Recessed integrated luminaire with 4 LED lighting spots. Remote power supply included.

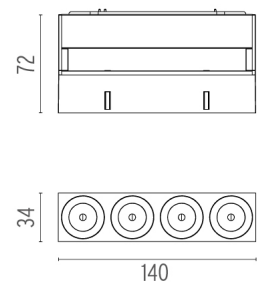
### ELECTRICAL

<b>Transformer availability</b>	Separate item
<b>Transformer mounting</b>	Remote
<b>Transformer type</b>	Electronic dimmable
<b>Emergency</b>	Without
<b>Insulation class</b>	Class III

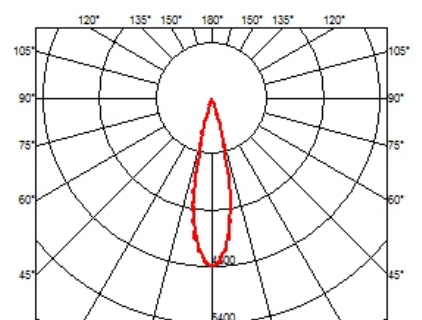
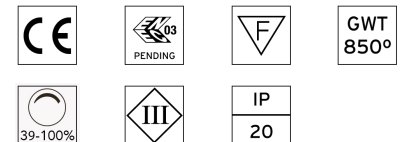
	03.9621.40 - 776lm	White / Black
	03.9621.14 - 776lm	Black / Black
	03.9620.40 - 790lm	White / White
	03.9620.14 - 790lm	Black / White
	03.9622.40 - 801lm	White / Chrome
	03.9622.14 - 801lm	Black / Chrome
	03.9623.40 - 786lm	White / Matt Gold
	03.9623.14 - 786lm	Black / Matt Gold

### PHYSICAL

<b>Weight (kg)</b>	0,34
--------------------	------



### CERTIFICATIONS



## Light Shadow Optic Medium On Board Dimmer . Lamps

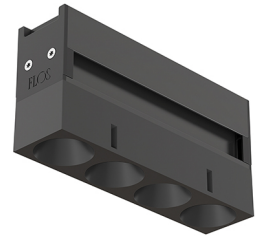


**Power LED**

**Lamp category:**  
LED

**Socket:**  
Special base




**Lamp type:**  
Power LED

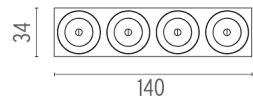
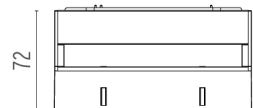


**Light Shadow Optic Medium On Board Dimmer**

designed by FLOS Architectural

Recessed integrated luminaire with 4 LED lighting spots. Remote power supply included.

-  03.9621.40 - 776lm      White / Black
-  03.9621.14 - 776lm      Black / Black
-  03.9620.40 - 790lm      White / White
-  03.9620.14 - 790lm      Black / White
-  03.9622.40 - 801lm      White / Chrome
-  03.9622.14 - 801lm      Black / Chrome
-  03.9623.40 - 786lm      White / Matt Gold
-  03.9623.14 - 786lm      Black / Matt Gold



**CERTIFICATIONS**

