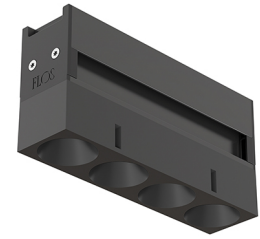


## LIGHT SHADOW OPTIC SPOT ON BOARD DIMMER

|                                |   |
|--------------------------------|---|
| <b>Number of heads</b>         | 1                                       |
| <b>Mounting</b>                | Track mounting                          |
| <b>Lamps description</b>       | Power LED 10,8W 4 x 280 lm 3000K CRI 90 |
| <b>Luminaire luminous flux</b> | Extreme Cut-off. See reference number   |
| <b>Voltage (V)</b>             | 24                                      |
| <b>Environment</b>             | Indoor                                  |
| <b>Notes</b>                   | Installation frame not required.        |



### OPTICAL

|                                    |           |
|------------------------------------|-----------|
| <b>Aiming</b>                      | Fixed     |
| <b>Light distribution symmetry</b> | Symmetric |
| <b>Beam angle</b>                  | 10° Spot  |

### Light Shadow Optic Spot On Board Dimmer

designed by FLOS Architectural

Recessed integrated luminaire with 4 LED lighting spots. Remote power supply included.

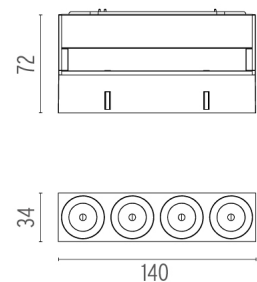
### ELECTRICAL

|                                 |                     |
|---------------------------------|---------------------|
| <b>Transformer availability</b> | Separate item       |
| <b>Transformer mounting</b>     | Remote              |
| <b>Transformer type</b>         | Electronic dimmable |
| <b>Emergency</b>                | Without             |
| <b>Insulation class</b>         | Class III           |

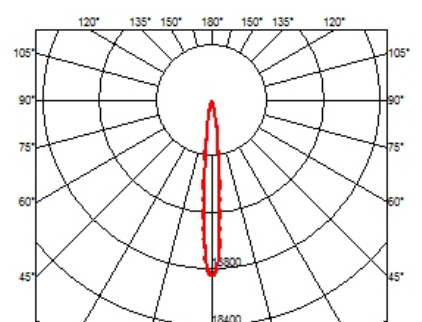
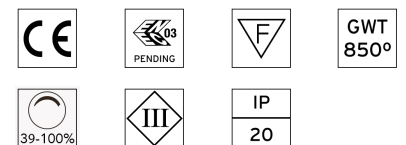
|                      |                   |
|----------------------|-------------------|
| ● 03.8953.40 - 846lm | White / Black     |
| ● 03.8953.14 - 846lm | Black / Black     |
| ○ 03.8952.40 - 864lm | White / White     |
| ● 03.8952.14 - 864lm | Black / White     |
| ● 03.8954.40 - 871lm | White / Chrome    |
| ● 03.8954.14 - 871lm | Black / Chrome    |
| ● 03.8955.40 - 858lm | White / Matt Gold |
| ● 03.8955.14 - 858lm | Black / Matt Gold |

### PHYSICAL

|                    |      |
|--------------------|------|
| <b>Weight (kg)</b> | 0,34 |
|--------------------|------|



### CERTIFICATIONS



## Light Shadow Optic Spot On Board Dimmer . Lamps

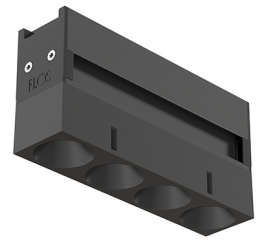


**Power LED**

**Lamp category:**  
LED

**Socket:**  
Special base

**Lamp type:**  
Power LED

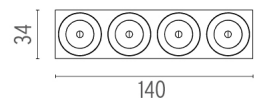
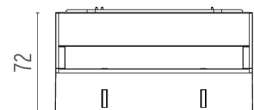


### Light Shadow Optic Spot On Board Dimmer

designed by FLOS Architectural

Recessed integrated luminaire with 4 LED lighting spots. Remote power supply included.

|  |                    |                   |
|--|--------------------|-------------------|
|  | 03.8953.40 - 846lm | White / Black     |
|  | 03.8953.14 - 846lm | Black / Black     |
|  | 03.8952.40 - 864lm | White / White     |
|  | 03.8952.14 - 864lm | Black / White     |
|  | 03.8954.40 - 871lm | White / Chrome    |
|  | 03.8954.14 - 871lm | Black / Chrome    |
|  | 03.8955.40 - 858lm | White / Matt Gold |
|  | 03.8955.14 - 858lm | Black / Matt Gold |



### CERTIFICATIONS

