

LIGHT SNIPER WALL-WASHER SQUARE

Number of heads	1
Mounting	Ceiling recessed
Lamps description	HI PAR 51 GX10 Max 35W
Voltage (V)	220/240
Environment	Indoor

OPTICAL

Light controller description	Lens
Aiming	Fixed
Light distribution symmetry	Asymmetric

ELECTRICAL

Control gear availability	Separate item
Control gear type	Conventional, Electronic
Control gear mounting	Remote
Emergency	Without
Insulation class	Class I

PHYSICAL

Cutout diameter (mm)	90
Length (mm)	100
Width (mm)	100
Recessed depth (mm)	155
Construction material	Aluminium
Weight (kg)	0,50

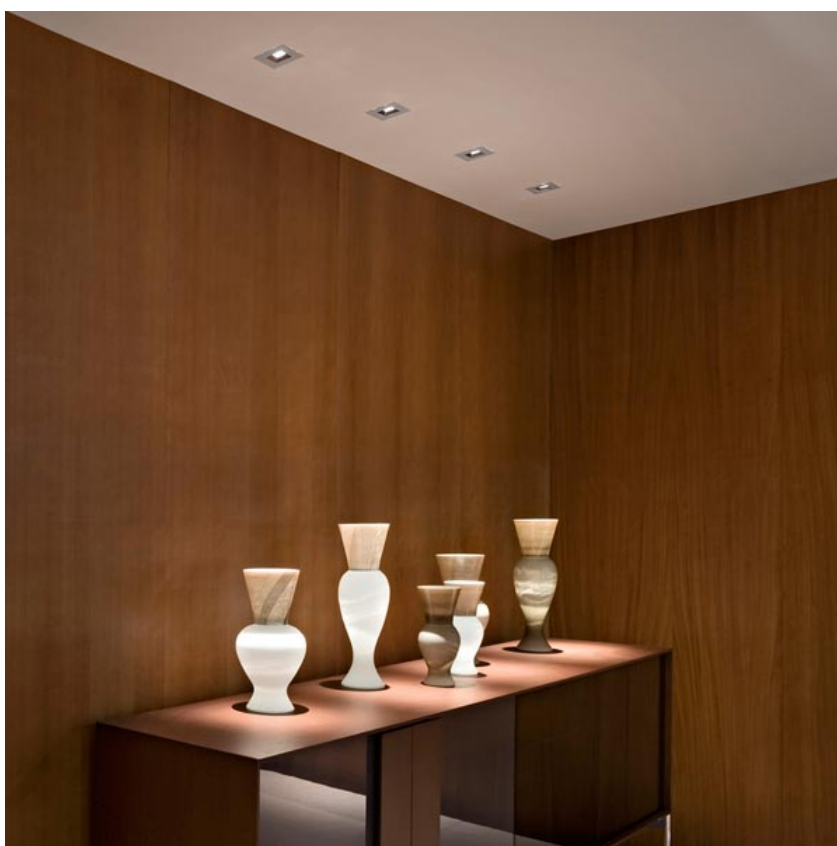
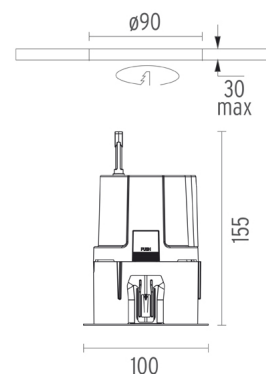


Light Sniper Wall-Washer Square
designed by FLOS Architectural

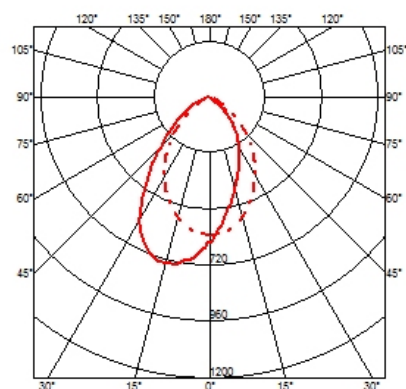
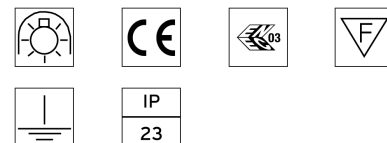
High performance metal halide lamp recessed downlight. Remote ballast not included

03.4656.06

Chrome

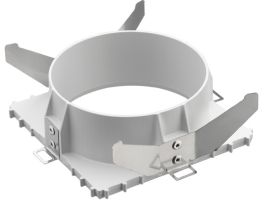


CERTIFICATIONS



Light Sniper Wall-Washer Square . Accessories

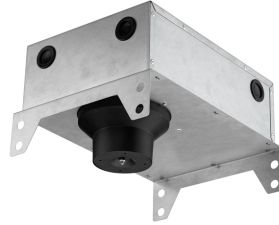
Mounting



○ 08.8240.00B
Flush ceiling square frame accessory



08.8243.00
08.8243.00.5U
08.8243.00.1U
Ceiling protector accessory.



08.8250.00
Concrete installation can.



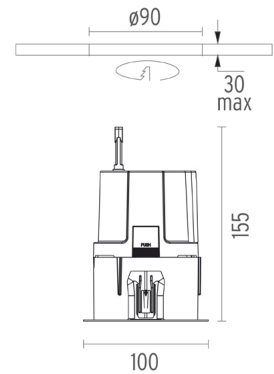
Light Sniper Wall-Washer Square
designed by FLOS Architectural

High performance metal halide lamp recessed downlight. Remote ballast not included

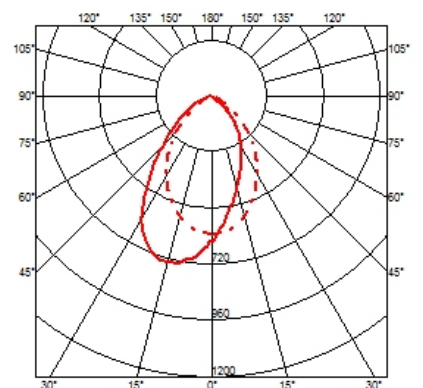
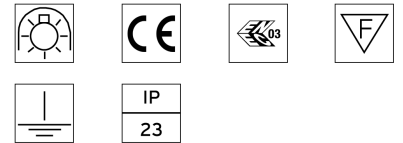
● 03.4656.06 Chrome



○ 08.8222.30A
Ceiling protector accessory. Square



CERTIFICATIONS



Light Sniper Wall-Washer Square . Lamps



60.6576

HI PAR 51

Lamp Watt:
20 W

Lamp category:
Metal halide

Socket:
GX10

Lamp angle:
10 °

Color temperature (K):
3000 °K

Catalog reference:
60.6576

Lamp type:
HI PAR 51



60.6577

HI PAR 51

Lamp Watt:
20 W

Lamp category:
Metal halide

Socket:
GX10

Lamp angle:
25 °

Color temperature (K):
3000 °K

Catalog reference:
60.6577

Lamp type:
HI PAR 51



60.6578

HI PAR 51

Lamp Watt:
20 W

Lamp category:
Metal halide

Socket:
GX10

Lamp angle:
40 °

Color temperature (K):
3000 °K

Catalog reference:
60.6578

Lamp type:
HI PAR 51



60.6637

HI PAR 51

Lamp Watt:
35 W

Lamp category:
Metal halide

Socket:
GX10

Lamp angle:
25 °

Color temperature (K):
3000 °K

Catalog reference:
60.6637

Lamp type:
HI PAR 51



60.6638

HI PAR 51

Lamp Watt:
35 W

Lamp category:
Metal halide

Socket:
GX10

Lamp angle:
40 °

Color temperature (K):
3000 °K

Catalog reference:
60.6638

Lamp type:
HI PAR 51



60.6636

HI PAR 51

Lamp Watt:
35 W

Lamp category:
Metal halide

Socket:
GX10

Lamp angle:
10 °

Color temperature (K):
3000 °K

Catalog reference:
60.6636

Lamp type:
HI PAR 51

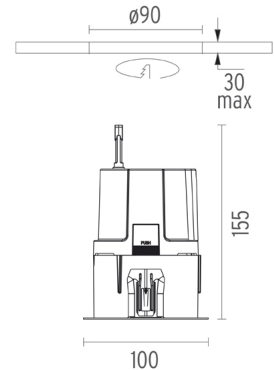


Light Sniper Wall-Washer Square
designed by FLOS Architectural

High performance metal halide lamp
recessed downlight. Remote ballast
not included

03.4656.06

Chrome



CERTIFICATIONS

