

## KAP 80 SQUARE ADJUSTABLE OPTIC FLOOD

|                                |  |
|--------------------------------|--|
| <b>Number of heads</b>         | I  |
| <b>Mounting</b>                | Ceiling recessed   |
| <b>Lamps description</b>       | LED Array DC 500 mA 9,2W 698 lm 2700K CRI 90   |
| <b>Luminaire luminous flux</b> | Extreme Cut-off. See reference number  |
| <b>Environment</b>             | Indoor   |
| <b>Notes</b>                   | Diffusing lens included. Fast&Perfect pre-installation frame to be ordered separately. |

### OPTICAL

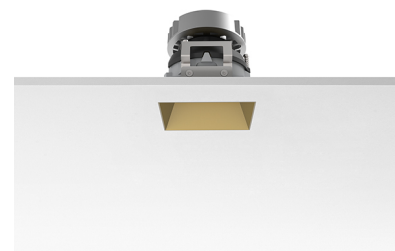
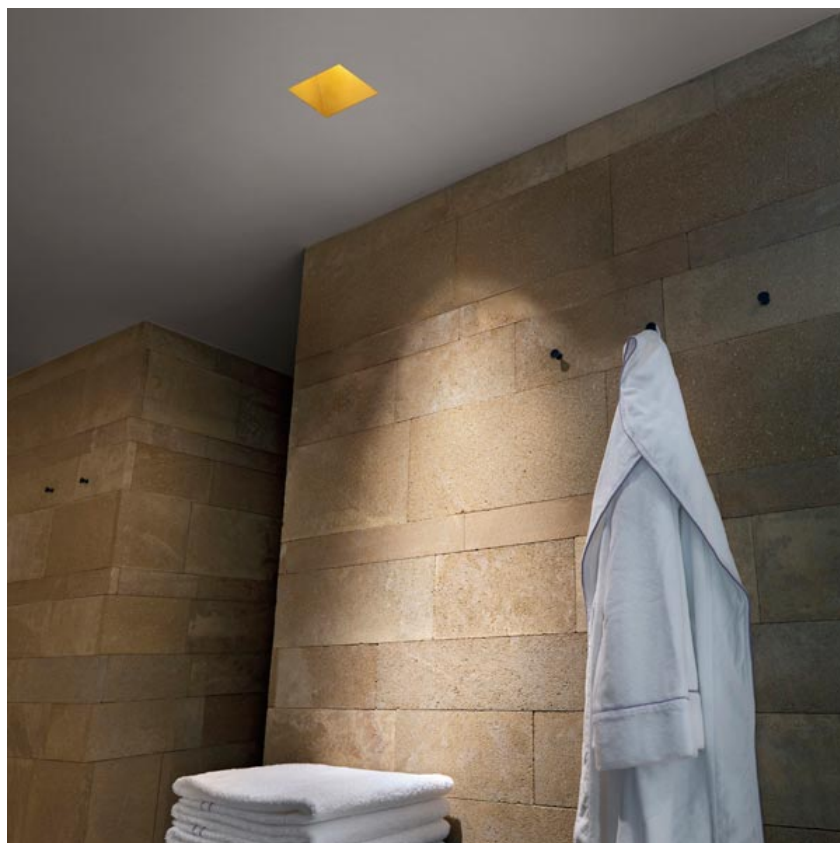
|                                    |            |
|------------------------------------|------------|
| <b>Aiming</b>                      | Adjustable |
| <b>Light distribution symmetry</b> | Symmetric  |
| <b>Beam angle</b>                  | 53°        |

### ELECTRICAL

|                                 |  |
|---------------------------------|--|
| <b>Transformer availability</b> | Separate item  |
| <b>Transformer mounting</b>     | Remote   |
| <b>Transformer type</b>         | Electronic, Electronic dimmable, Electronic dimmable I-10V, Electronic dimmable dali |
| <b>Emergency</b>                | Without  |
| <b>Insulation class</b>         | Class III  |

### PHYSICAL

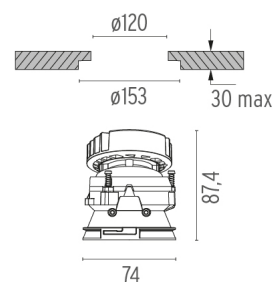
|                              |                   |
|------------------------------|-------------------|
| <b>Recessed depth (mm)</b>   | 93                |
| <b>Construction material</b> | Die-cast aluminum |
| <b>Weight (kg)</b>           | 0,24              |



**Kap 80 Square Adjustable Optic Flood**  
designed by FLOS Architectural

Recessed luminaire with LED light source. Power supply not included.

|                    |        |
|--------------------|--------|
| 03.4545.GL - 652lm | Gold   |
| 03.4545.BI - 675lm | White  |
| 03.4545.BU - 607lm | Blue   |
| 03.4545.74 - 600lm | Black  |
| 03.4545.CU - 638lm | Copper |



### CERTIFICATIONS



## Kap 80 Square Adjustable Optic Flood . Accessories

### Power Supply



60.8534

#### Constant Current Power Supply for LED. 32W

Continuous current power supply of 32W, 230/240V - 50/60Hz with power current selected through adjustable 350/500/700 mA switch by trailing and leading edge dimming or push dimming.

Maximum length of 1.5 mm<sup>2</sup> secondary conductor (m): 10

Maximum length of 2.5 mm<sup>2</sup> secondary conductor (m): 15



60.8533

#### Constant Current Power Supply for LED. 25W

Continuous current power supply of 25W, 120-240V - 50/60Hz with power current selected through adjustable 350/500/700mA 1-10V switch or push dimming.

Maximum length of 1.5 mm<sup>2</sup> secondary conductor (m): 10

Maximum length of 2.5 mm<sup>2</sup> secondary conductor (m): 15



60.8847

#### Constant Current Power Supply for LED. 10-20W

Continuous current power supply of 10-20W, 110/240V - 50/60Hz with power current selected through adjustable 250/350/400/450/500/ 550/600/700 mA Dali switch. (Johnny 120 with accessories max 450 mA)

Maximum length of 1.5 mm<sup>2</sup> secondary conductor (m): 10

Maximum length of 2.5 mm<sup>2</sup> secondary conductor (m): 15



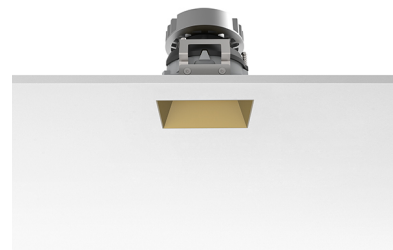
60.8880

#### Constant Current Power Supply for LED. 6W-100/14W-240V

Continuous current power supply of 6W, 100V / 14W, 240V - 50/60Hz with 500 mA supply voltage.

Maximum length of 1.5 mm<sup>2</sup> secondary conductor (m): 50

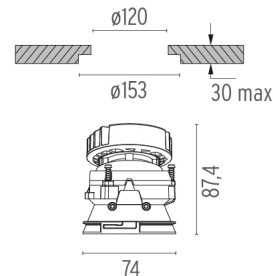
Maximum length of 2.5 mm<sup>2</sup> secondary conductor (m): 50



**Kap 80 Square Adjustable Optic Flood**  
designed by FLOS Architectural

Recessed luminaire with LED light source. Power supply not included.

|                    |        |
|--------------------|--------|
| 03.4545.GL - 652lm | Gold   |
| 03.4545.B1 - 675lm | White  |
| 03.4545.BU - 607lm | Blue   |
| 03.4545.74 - 600lm | Black  |
| 03.4545.CU - 638lm | Copper |



### CERTIFICATIONS



## Kap 80 Square Adjustable Optic Flood . Accessories

### Mounting



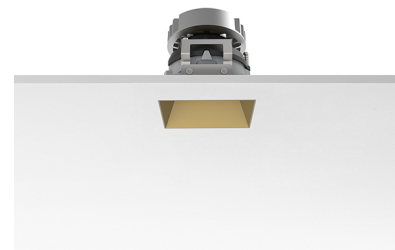
08.9103.00

**Installation frame No Trim**



08.9101.00

**Fast&Perfect tool ø153**

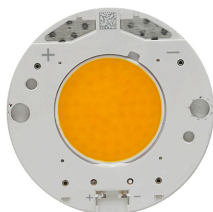


**Kap 80 Square Adjustable Optic Flood**  
designed by FLOS Architectural

Recessed luminaire with LED light source. Power supply not included.

|                    |        |
|--------------------|--------|
| 03.4545.GL - 652lm | Gold   |
| 03.4545.BI - 675lm | White  |
| 03.4545.BU - 607lm | Blue   |
| 03.4545.74 - 600lm | Black  |
| 03.4545.CU - 638lm | Copper |

## Kap 80 Square Adjustable Optic Flood . Lamps

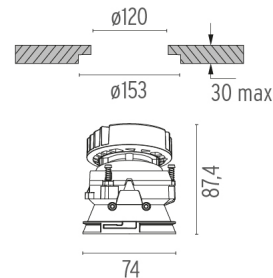


### LED Array

**Lamp category:**  
LED

**Socket:**  
Special base

**Lamp type:**  
LED Array



### CERTIFICATIONS

