

EASY KAP Ø105 FIXED

Number of heads	1
Mounting	Ceiling recessed
Lamps description	LED Array DC 500 mA 9,2W 810 lm 3000K CRI 90
Luminaire luminous flux	Extreme Cut-off. See reference number
Environment	Indoor

OPTICAL

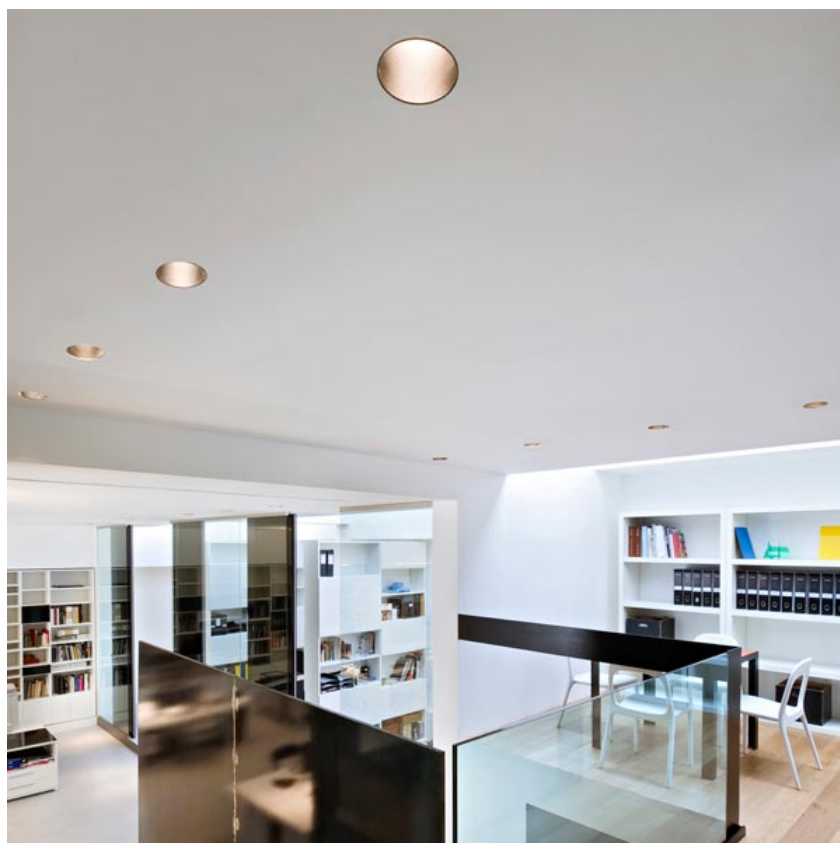
Aiming	Fixed
Light distribution symmetry	Symmetric
Beam angle	40°

ELECTRICAL

Transformer availability	Separate item
Transformer mounting	Remote
Transformer type	Electronic, Electronic dimmable, Electronic dimmable I-10V, Electronic dimmable dali
Emergency	Without
Insulation class	Class III

PHYSICAL

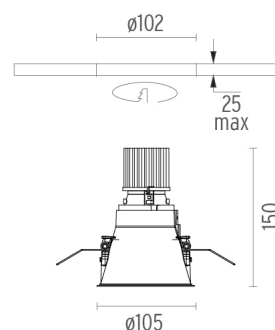
Cutout diameter (mm)	102
Diameter (mm)	105
Recessed depth (mm)	150
Construction material	Die-cast aluminum
Weight (kg)	0,40



Easy Kap Ø105 Fixed
designed by FLOS Architectural

Recessed luminaire with LED light source. Power supply not included. Installation frame not necessary.

03.4462.GLC - 377lm	Gold
03.4462.B1C - 407lm	White
03.4462.BUC - 282lm	Blue
03.4462.74C - 285lm	Black
03.4462.CUC - 389lm	Copper



CERTIFICATIONS



Easy Kap Ø105 Fixed . Accessories

Power Supply



60.8650

Constant Current Power Supply for LED. 20W / 500 mA

Non dimmable continuous current power supply 220/240V - 50/60Hz. (110V = 12V)

Maximum length of 1.5 mm² secondary conductor (m): 50

Maximum length of 2.5 mm² secondary conductor (m): 50



60.8534

Constant Current Power Supply for LED. 32W

Continuous current power supply of 32V, 230/240V - 50/60Hz with power current selected through adjustable 350/500/700 mA switch by trailing and leading edge dimming or push dimming.

Maximum length of 1.5 mm² secondary conductor (m): 10

Maximum length of 2.5 mm² secondary conductor (m): 15



60.8533

Constant Current Power Supply for LED. 25W

Continuous current power supply of 25V, 120-240V - 50/60Hz with power current selected through adjustable 350/500/700mA 1-10V switch or push dimming.

Maximum length of 1.5 mm² secondary conductor (m): 10

Maximum length of 2.5 mm² secondary conductor (m): 15



60.8530

Constant Current Power Supply for LED. 25-50W

Continuous current power supply of 25-50W, 220/240V - 50/60Hz with power current selected through adjustable 350/500/550/650/700/750/850/900/1050mA Dali switch, 1-10V switch or push dimming.

Maximum length of 1.5 mm² secondary conductor (m): 10

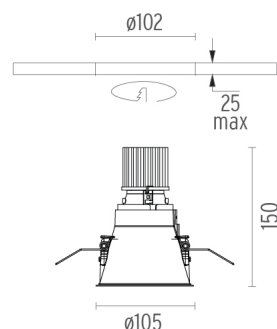
Maximum length of 2.5 mm² secondary conductor (m): 15



Easy Kap Ø105 Fixed
designed by FLOS Architectural

Recessed luminaire with LED light source. Power supply not included. Installation frame not necessary.

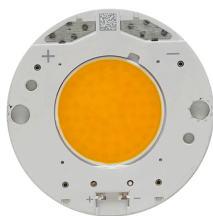
03.4462.GLC - 377lm	Gold
03.4462.B1C - 407lm	White
03.4462.BUC - 282lm	Blue
03.4462.74C - 285lm	Black
03.4462.CUC - 389lm	Copper



CERTIFICATIONS



Easy Kap Ø105 Fixed . Lamps



LED Array

Lamp category:

LED

Socket:

Special base

Lamp type:






LED Array

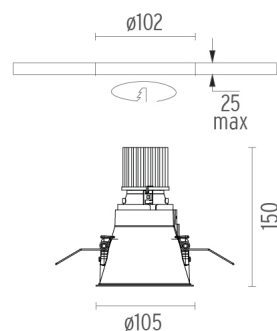


Easy Kap Ø105 Fixed

designed by FLOS Architectural

Recessed luminaire with LED light source. Power supply not included. Installation frame not necessary.

	03.4462.GLC - 377lm	Gold
	03.4462.B1C - 407lm	White
	03.4462.BUC - 282lm	Blue
	03.4462.74C - 285lm	Black
	03.4462.CUC - 389lm	Copper



CERTIFICATIONS

