

FREE SIXTY TRIM

Number of heads	1
Mounting	Ceiling recessed
Lamps description	LED Array 16W 1883 lm 3000K CRI 90
Luminaire luminous flux	Extreme Cut-off. See reference number
Environment	Indoor
Notes	Installation frame must be ordered separately (08.0508.40 / 08.0508.CU / 08.0508.14).

OPTICAL

Aiming	Adjustable
Light distribution symmetry	Symmetric
Beam angle	12°

ELECTRICAL

Transformer availability	Separate item
Transformer mounting	Remote
Transformer type	Electronic, Electronic dimmable, Electronic dimmable I-10V, Electronic dimmable dali
Emergency	Without
Insulation class	Class III

PHYSICAL

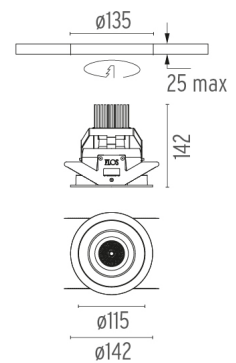
Cutout diameter (mm)	135
Weight (kg)	0,44



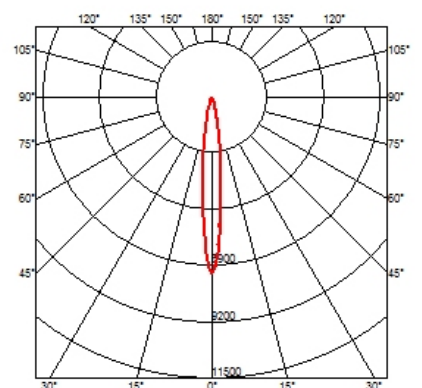
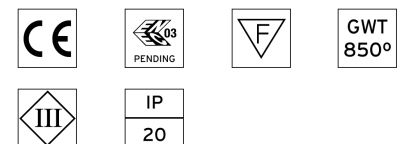
Free Sixty Trim
designed by Philippe Starck

High-performance recessed luminaire with LED light source. Remote power supply not included. Pre-installation frame must be ordered separately.

● 03.2010.40 - 566lm	White
● 03.2010.CU - 566lm	Copper
● 03.2010.14 - 566lm	Black



CERTIFICATIONS



Free Sixty Trim . Accessories

Power Supply



60.8536

Constant Current Power Supply for LED. 13-20W

Continuous current power supply of 13-20W, 110/240V - 50/60Hz with power current selected through adjustable 250/350/400/450/500/550/600/700mA 1-10V switch or push dimming. (Johnny 120 with accessories max 450 mA)

Maximum length of 1.5 mm² secondary conductor (m): 10

Maximum length of 2.5 mm² secondary conductor (m): 15



60.8847

Constant Current Power Supply for LED. 10-20W

Continuous current power supply of 10-20W, 110/240V - 50/60Hz with power current selected through adjustable 250/350/400/450/500/550/600/700 mA Dali switch. (Johnny 120 with accessories max 450 mA)

Maximum length of 1.5 mm² secondary conductor (m): 10

Maximum length of 2.5 mm² secondary conductor (m): 15

60.9268

Constant Current Power Supply for LED. 18W

Continuous current power supply of 18W, 220/240V - 50/60Hz with 450 mA supply voltage push dimming.

Maximum length of 1.5 mm² secondary conductor (m): 15

Maximum length of 2.5 mm² secondary conductor (m): 15

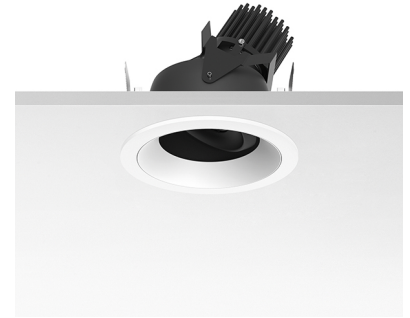
60.9073

Continuous current power supply of 13-42W

Continuous current power supply of 13-42W, 220/240V - 50/60Hz with power current selected through adjustable 300/350/400/450/500/550/600/650/700/750/800/850/900/950/1000/1050 mA.

Maximum length of 1.5 mm² secondary conductor (m): 10

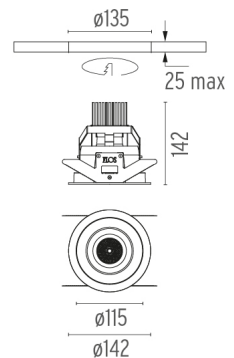
Maximum length of 2.5 mm² secondary conductor (m): 15



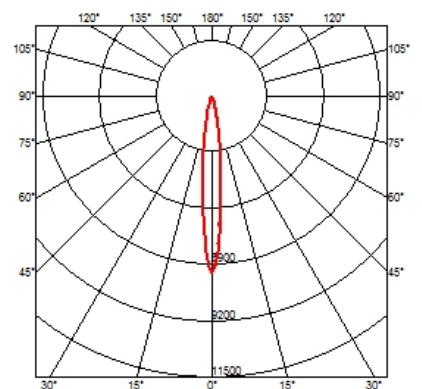
Free Sixty Trim designed by Philippe Starck

High-performance recessed luminaire with LED light source. Remote power supply not included. Pre-installation frame must be ordered separately.

- 03.2010.40 - 566lm White
- 03.2010.CU - 566lm Copper
- 03.2010.14 - 566lm Black



CERTIFICATIONS



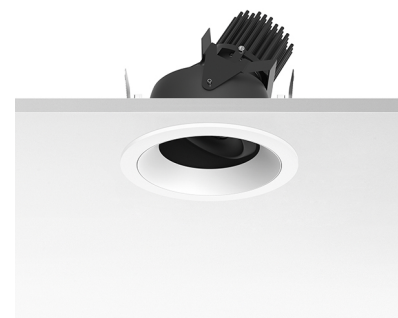
Free Sixty Trim . Accessories

Mounting



- 08.0508.40
- 08.0508.CU
- 08.0508.14

Installation Frame Trim

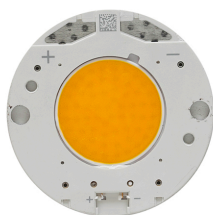


Free Sixty Trim
designed by Philippe Starck

High-performance recessed luminaire with LED light source. Remote power supply not included. Pre-installation frame must be ordered separately.

-
- 03.2010.40 - 566lm White
 - 03.2010.CU - 566lm Copper
 - 03.2010.14 - 566lm Black
-

Free Sixty Trim . Lamps

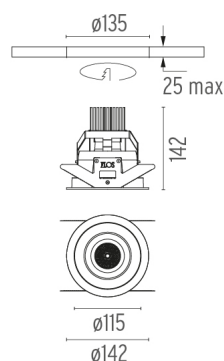


LED Array

Lamp category:
LED

Socket:
Special base

Lamp type:
LED Array



CERTIFICATIONS

