

**BEGA****84 290**

In-ground luminaire

IP 67

Project · Reference number

Date

## Product data sheet

**Application**

Recessed LED location luminaire for recessed mounting in compacted surfaces, paths and open areas. Drive-over luminaire for vehicles with pneumatic tyres.

**Please note:**

Luminaire must not be used for installation in road lanes, where the fixture is exposed to a horizontal strain due to braking, acceleration and change of direction.

For walk-through public areas, we recommend skid-blocking glass

– see accessories.

**Product description**

Luminaires and installation housings made of highly corrosion-resistant aluminium  
BEGA Tricoat® coating technology  
Ring made of glass fibre reinforced synthetic material

Cover ring made of stainless steel

Steel grade no. 1.4301

Safety glass, white

Recess housing with cable entry for cable conduit, max  $\varnothing$  20 mm

1,8 m water-resistant connecting cable

07RN8-F 3 G 1<sup>□</sup> with implemented water stopper and 1.2 m PVC cable conduit

LED power supply unit

220-240 V  $\sim$  0/50-60 Hz

DC 176-264 V

Safety class I

Protection class IP 67

Dust-tight and protection against temporary immersion

Luminaire is suitable for direct installation in heat-insulating material

Pressure load 5,000 kg (~50 kN)

Pressure load 5,000 kg (~50 kN)

CE – Conformity mark

Weight: 11.2 kg

**Inrush current**

Inrush current: 11 A / 112  $\mu$ s

Maximum number of luminaires of this type per miniature circuit breaker:

B 10A: 34 luminaires

B 16A: 55 luminaires

C 10A: 57 luminaires

C 16A: 92 luminaires

**Lamp**

Module connected wattage 6.6 W

Luminaire connected wattage 7.7 W

Rated temperature  $t_a = 25$  °C

Ambient temperature  $t_{a \max} = 45$  °C

When installed in heat-insulating material  $t_{a \max} = 45$  °C

On request we can offer you modifications for environments with higher temperatures as a customized product.

**84 290 K3**

Module designation LED-1017/830

Colour temperature 3000 K

Colour rendering index CRI > 80

Module luminous flux 1340 lm

Luminaire luminous flux 552 lm

Luminaire luminous efficiency 71,7 lm/W

**84 290 K4**

Module designation LED-1017/840

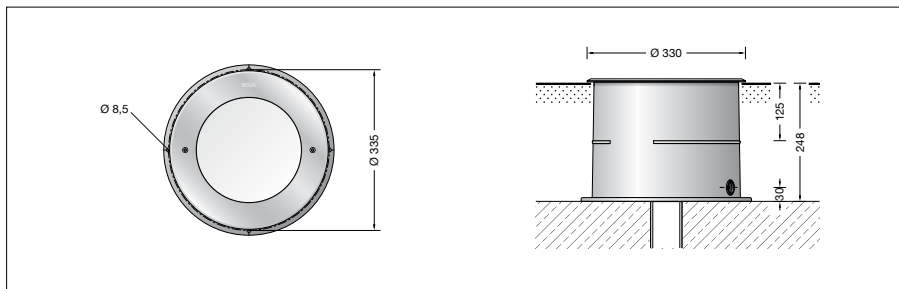
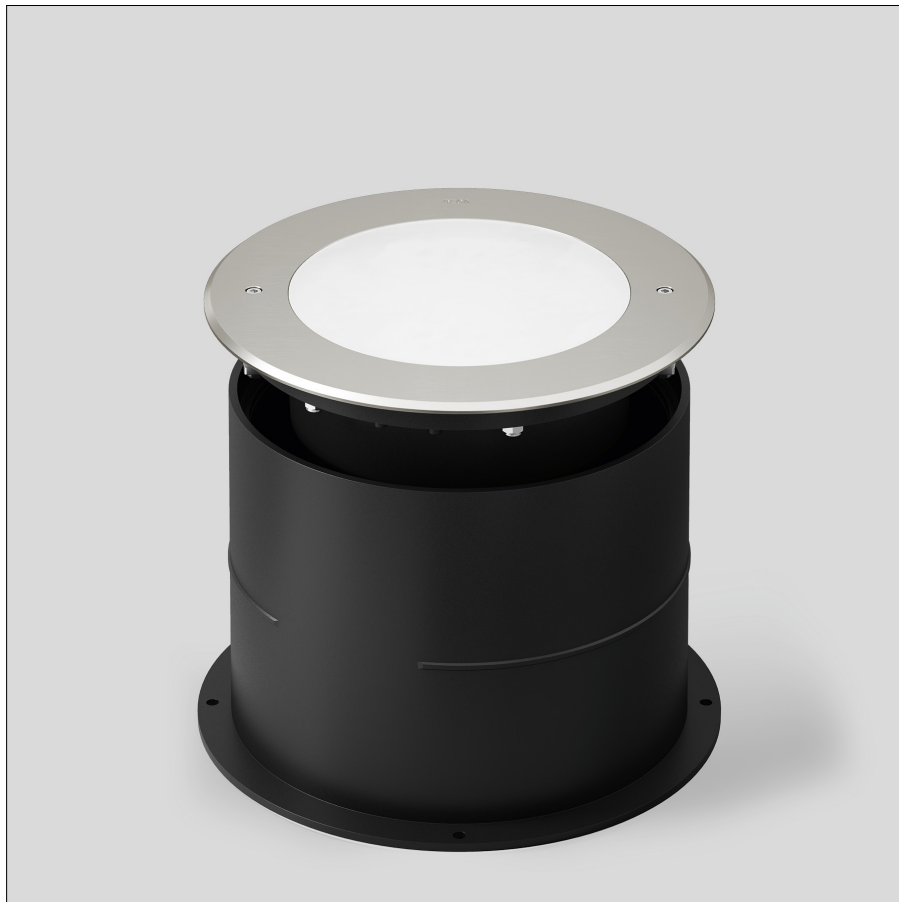
Colour temperature 4000 K

Colour rendering index CRI > 80

Module luminous flux 1380 lm

Luminaire luminous flux 569 lm

Luminaire luminous efficiency 73,9 lm/W

**Service life · Ambient temperature**

Rated temperature  $t_a = 25$  °C

LED psu: > 50,000h

LED module: > 200,000h (L 80 B 50)

100,000h (L 90 B 50)

Ambient temperature  $t_{a \max} = 45$  °C (100 %)

LED psu: 50,000h

LED module: > 200,000h (L 80 B 50)

100,000h (L 90 B 50)

**Article No. 84 290**

LED colour temperature optionally 3000K

or 4000K

3000 K – Article number + **K3**

4000 K – Article number + **K4**

We supply this luminaire with skid-blocking glass which is denoted by **R** after the article number.

**Light technique**

Luminaire data for the light planning program DIALux for outdoor lighting, street lighting and indoor lighting as well as luminaire data in EULUMDAT- and IES-format you will find on the BEGA web page [www.bega.com](http://www.bega.com).

**Accessories**

**14001414R** Skid-blocking glass in accordance with EN ISO 51130 R13 Surface abrasion in accordance with EN ISO 10545-7:

Category II

Anti-slip protection in accordance with DIN 51097 Class C

Distribution box for installation in soil

**70 730** Distribution box with 7 cable entries Connection terminals 5 x 4<sup>□</sup>

**71 053** Distribution box with 10 cable entries Connection terminals 6 x 16<sup>□</sup>

A separate instructions for use can be provided upon request.